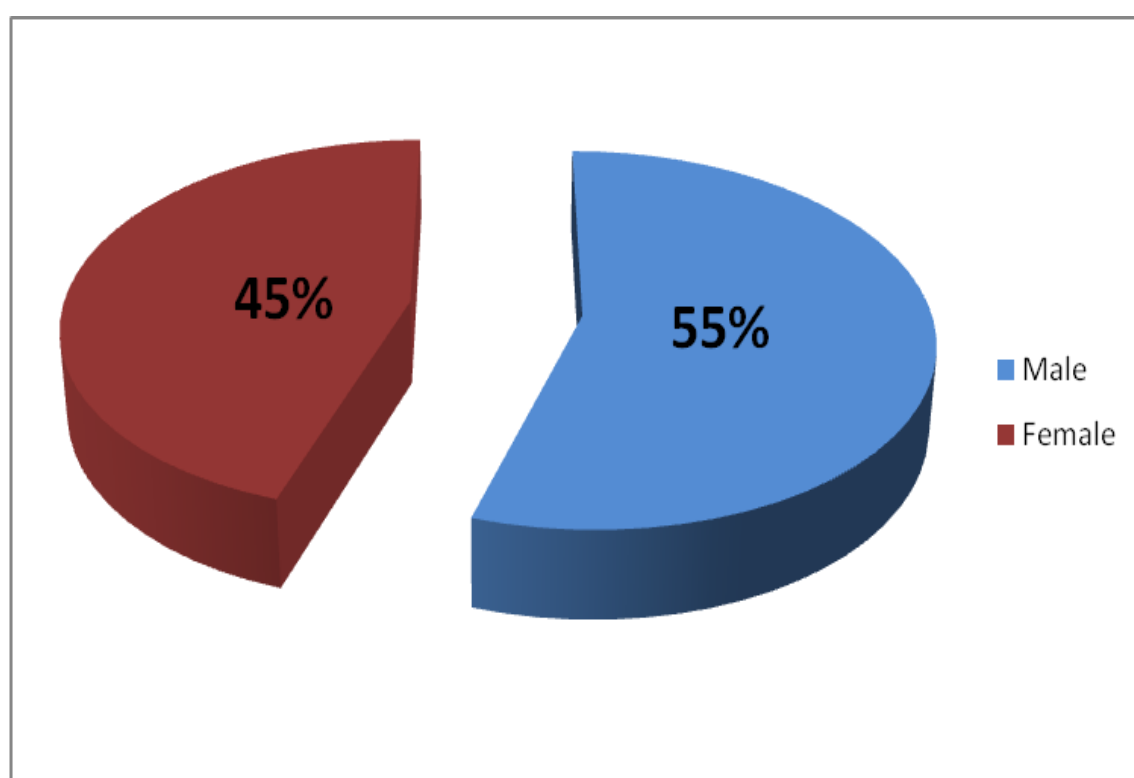


## RESULTS

**Table (4): Basic characteristics of the study group:**

	N	Minimum	Maximum	Mean	Std. Deviation
AGE (yr)	44	3.00	17.00	9.8977	3.56269
Dialysis Duration (yr)	44	0.50	7.00	3.1023	1.83182
Hemoglobin (g/dl)	43	4.60	14.30	10.0465	2.36073
Hematocrit (%)	43	17.50	46.10	31.8837	7.17462
CVP (pre)*	8	9.00	15.50	11.7500	2.01778
IVCD pre *(mm)	44	5.80	10.50	7.4250	1.33349
IVCD during*** (mm)	44	5.00	9.40	6.9250	1.17416
IVCD post** (mm)	44	4.00	8.80	6.2682	1.18396
IVCD °comp (mm)	7	4.90	8.00	6.6000	1.40119
Pre* SBP	44	90.00	160.00	117.9545	16.64675
Pre* DBP	44	60.00	120.00	77.3864	13.48939
Dur*** SBP	44	80.00	160.00	115.0000	17.32051
Dur*** DBP	44	50.00	120.00	76.5909	14.61811
Post**SBP	44	80.00	140.00	106.5909	15.39302
Post** DBP	44	40.00	100.00	70.2273	12.29268
°Comp SBP	7	80.00	150.00	107.1429	26.90371
°Comp DBP	7	40.00	100.00	65.7143	24.39750

\*Pre,Pre HD session \*\* Post,Post HD session\*\*\* Dur,During HD session °Comp,Complication during HD session



:

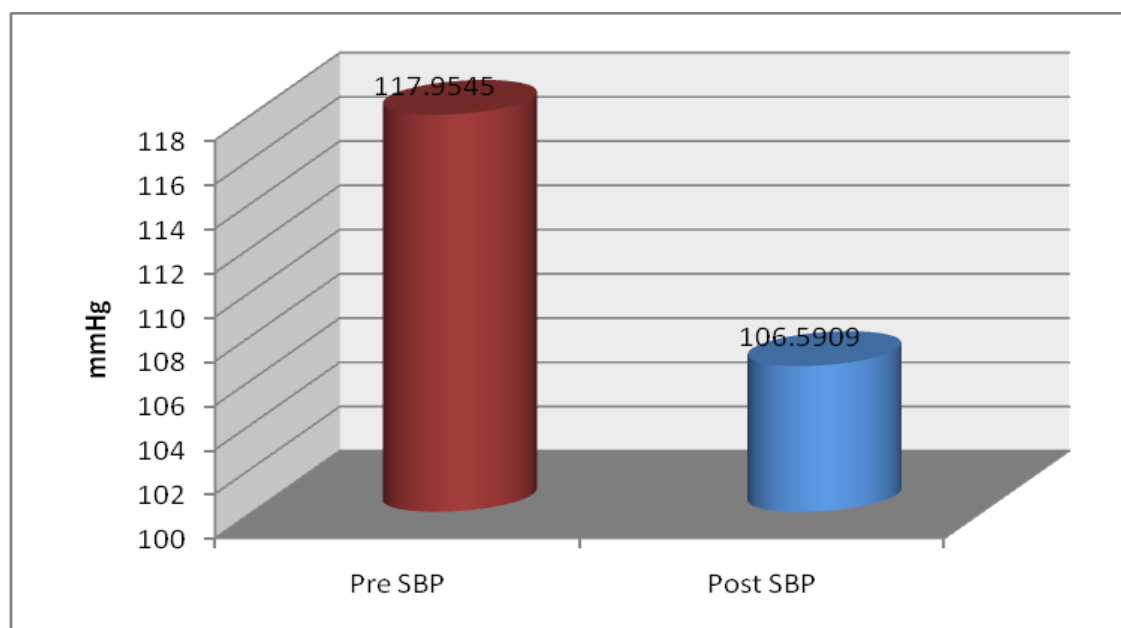
***Figure (2): Sex distribution among study group.***

**Table (5): Comparison between systolic blood pressure (SBP) pre & post HD.**

	Mean	S.D	T	P
Pre SBP	117.9545	16.646	5.9	<0.001
Post SBP	106.5909	15.393		

This table shows that there is a highly significant statistical difference between SBP pre & post HD ( $p < 0.01$ ) in the study group.

**Figure (3): Comparison between systolic blood pressure (SBP) pre & post HD.**

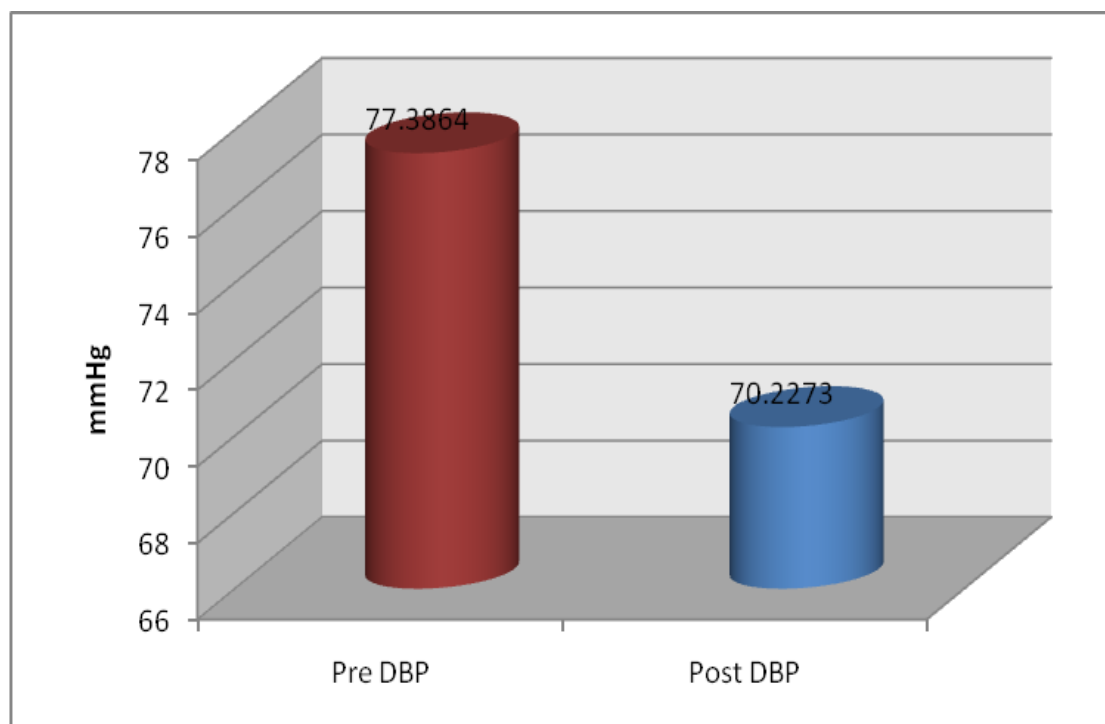


**Table (6): Comparison between diastolic blood pressure (DBP) pre & post HD.**

	Mean	S.D	T	P
Pre DBP	77.3864	13.489	4.3	<0.001
Post DBP	70.2273	12.292		

This table shows that there is a highly significant statistical difference between DBP pre & post HD ( $p < 0.01$ ) in the study group.

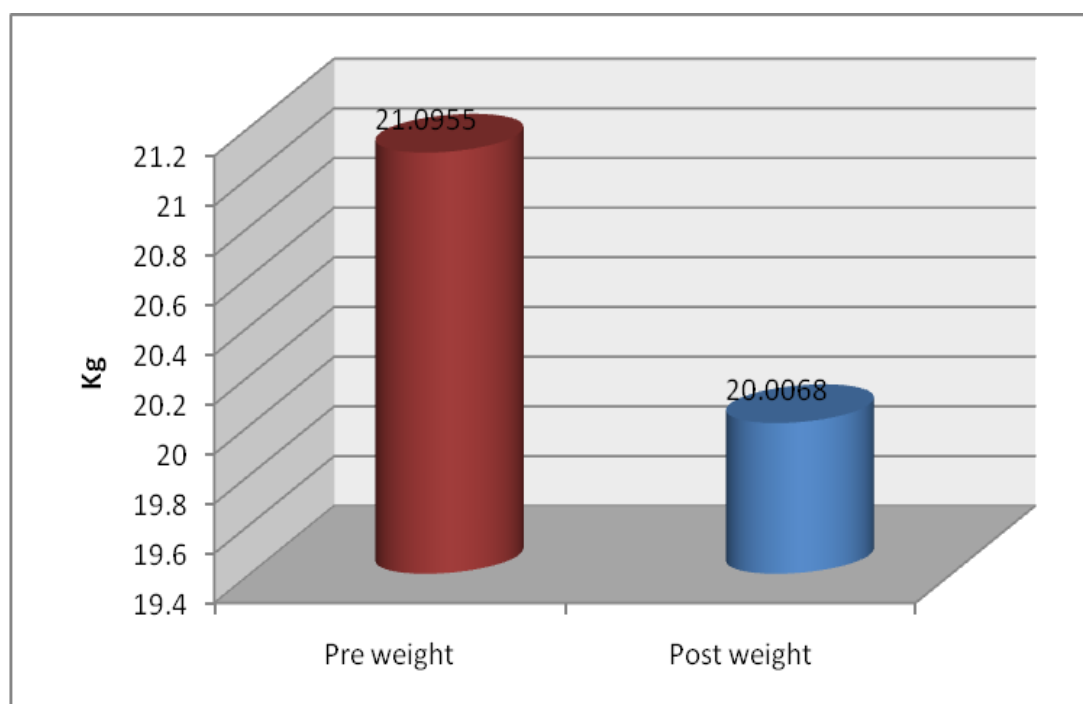
**Figure (4): Comparison between diastolic blood pressure (DBP) pre & post HD.**



**Table (7): Comparison between the weight pre & post HD.**

	Mean	S.D	t	P
Pre weight	21.0955	6.509	12.8	<0.001
Post weight	20.0068	6.310		

This table shows that there is a highly significant statistical difference between the weight pre HD and weight post HD ( $p < 0.01$ ).

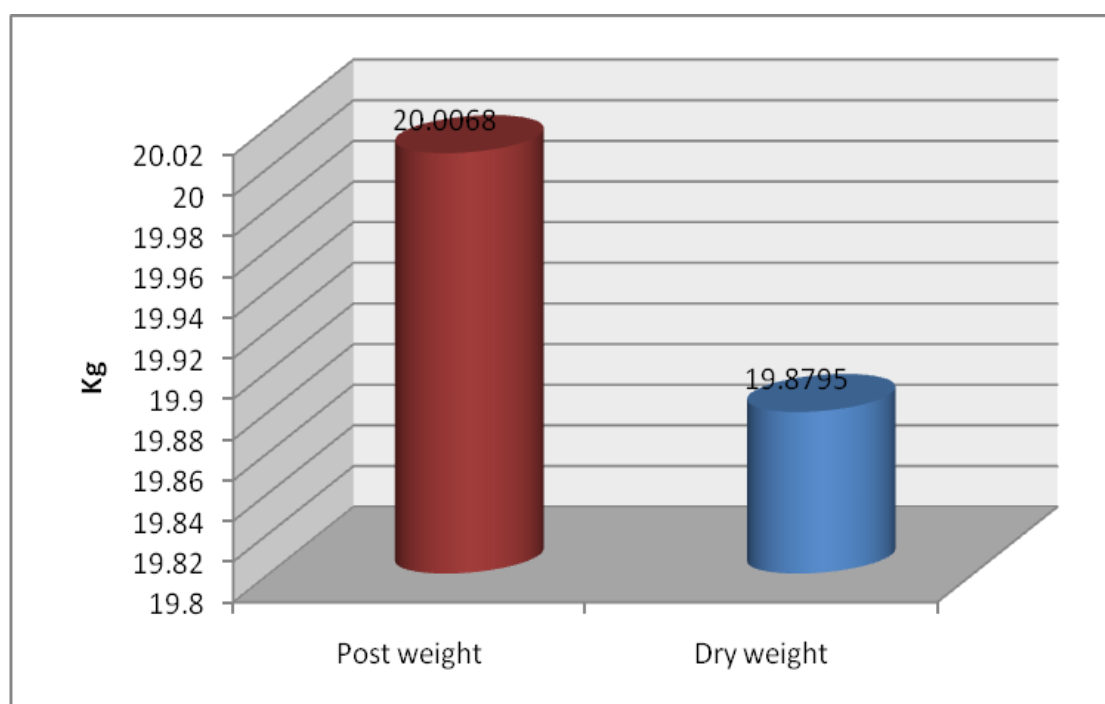
**Figure (5): Comparison between the weight pre & post HD.**

**Table (8): Comparison between the weight post HD & the dry weight.**

	Mean	S.D	T	p
Post weight	20.0068	6.310	0.1	>0.05
Dry weight	19.8795	6.257		

This table shows that there is no statistically significant difference between the post weight and the dry weight ( $p > 0.05$ ).

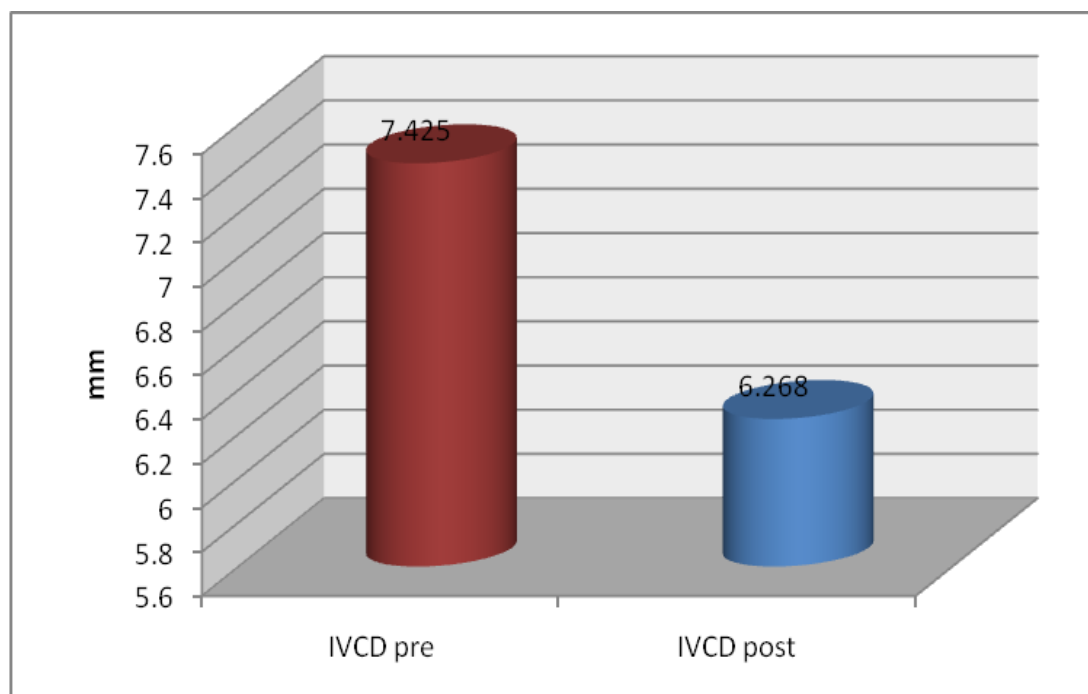
**Figure (6): Comparison between the weight post HD & the dry weight.**



**Table (9): Comparison between IVCD pre & post HD.**

	Mean	S.D	t	p
IVCD pre	7.425	1.3335	15.1	<0.001
IVCD post	6.268	1.1840		

This table shows that there is a highly significant statistical difference between IVCD pre & post HD ( $p < 0.01$ ).

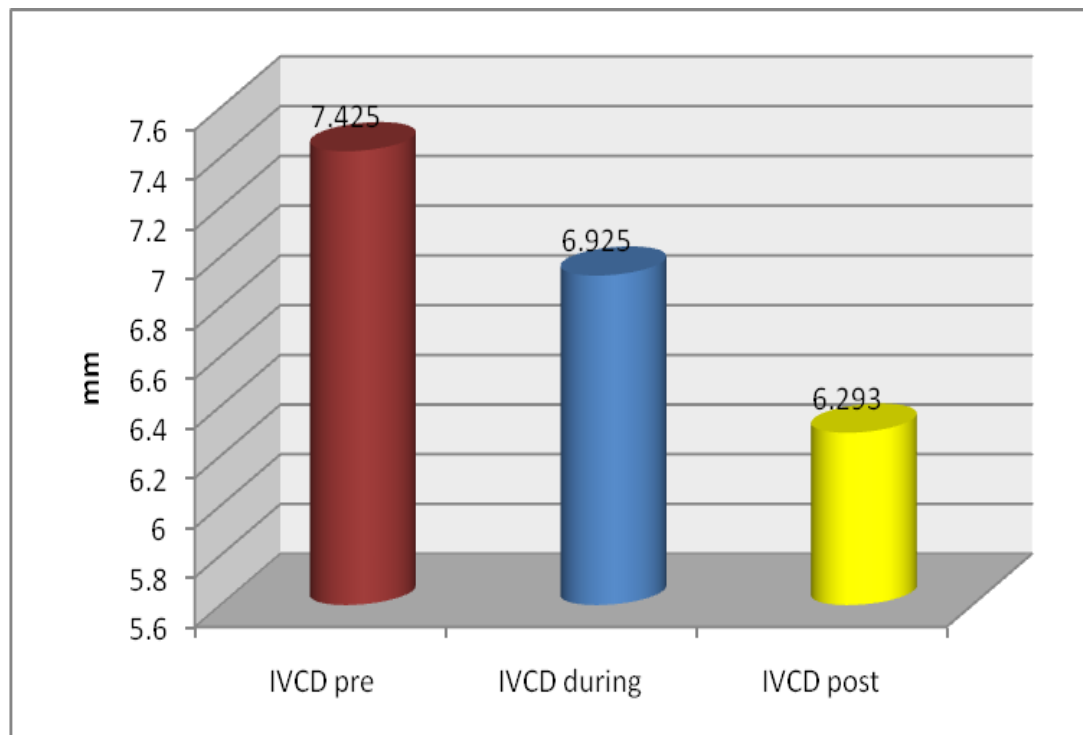
**Figure (7): Comparison between IVCD pre & post HD.**

**Table (10): Comparison between IVCD pre, post and during HD.**

	Mean	S.D	Minimum	Maximum	F	p
Pre	7.4250	1.33349	5.80	10.50	9.2	<0.001
During	6.9250	1.17416	5.00	9.40		
Post	6.2930	1.18631	4.00	8.80		
Total	6.8855	1.30921	4.00	10.50		

This table shows that there is a highly significant statistical difference in comparison between the IVCD pre, post and during HD ( $p < 0.01$ ) in the study group.

**Figure (8): Comparison between IVCD pre, post and during HD.**



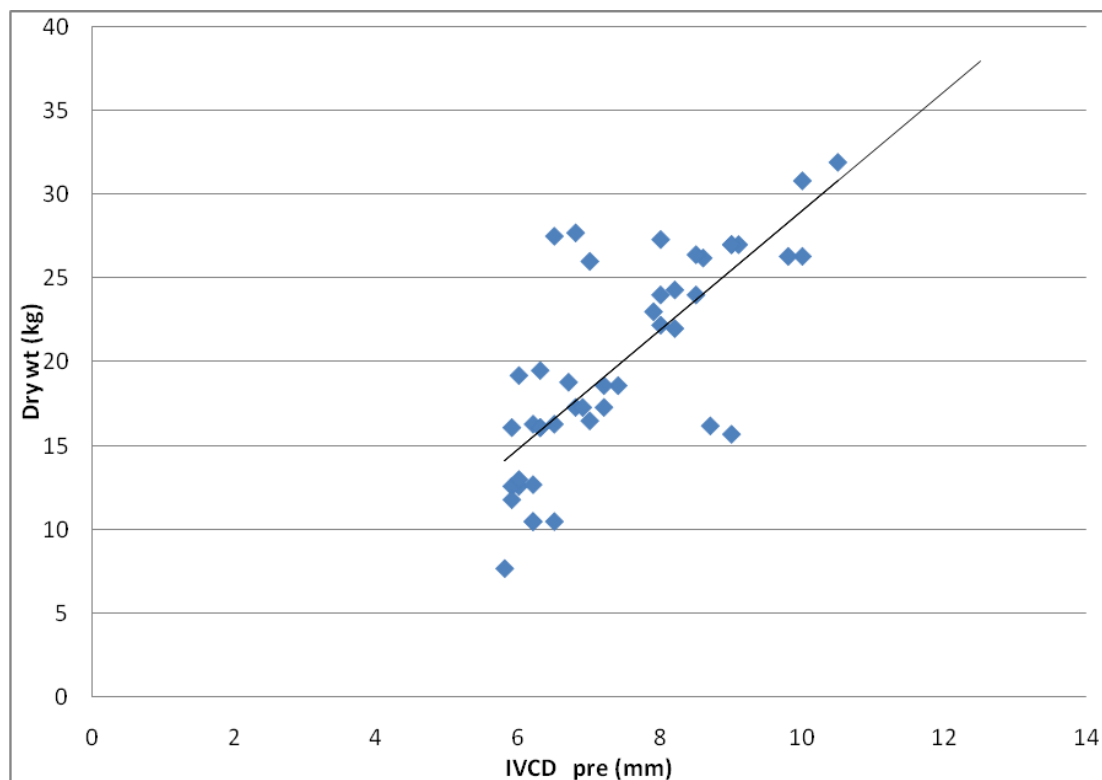


**Table (11): Correlation between IVCD pre and different variables of the studied group.**

	IVCD pre	
	(r)	P
Dry Weight	.758**	.000
pre Weight	.786**	.000
post Weight	.761**	.000
IVCD post	.925**	.000
IVCD during	.967**	.000
pre SBP	.433**	.003
pre DBP	.310*	.040
Dur SBP	.364*	.015
Dur DBP	.374*	.012
Post SBP	.463**	.002
Post DBP	.564**	.000

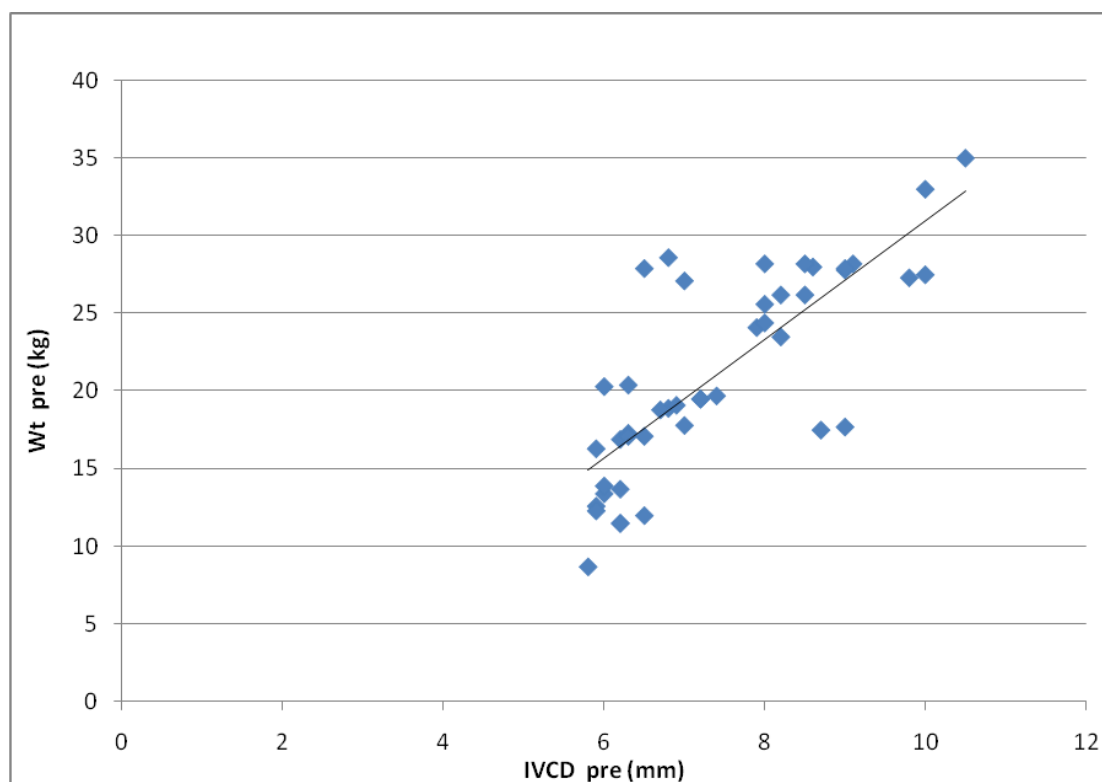
\*\* p- Values  $\leq 0.05$  are considered significant.

**Figure (9): Correlation Coefficient "r" between IVCD pre and dry weight of the studied group.**



IVCD pre show + ve highly significant correlation with dry weight ( $p < 0.01$ ) as shown in Figure (9).

**Figure (10): Correlation Coefficient "r" between IVCD pre and pre weight of the studied group.**

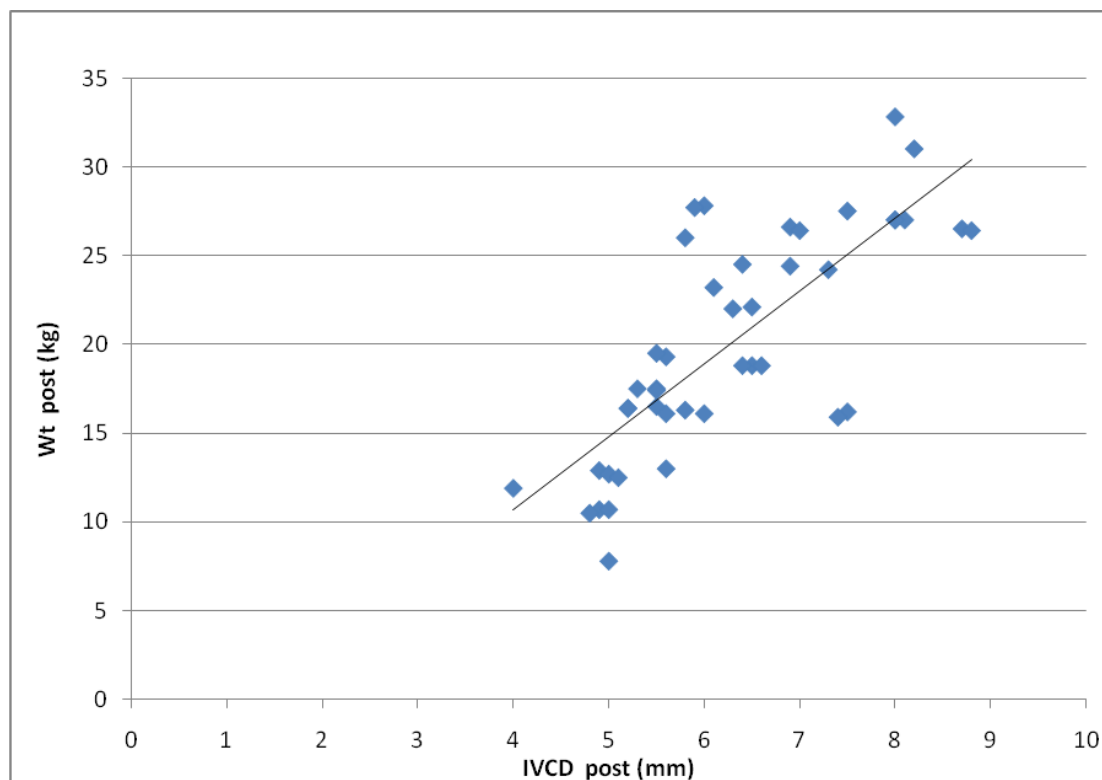


IVCD pre show + ve highly significant correlation with pre weight ( $p < 0.01$ ) as shown in Figure (10).

**Table (12): Correlation between IVCD post and different variables of the studied group.**

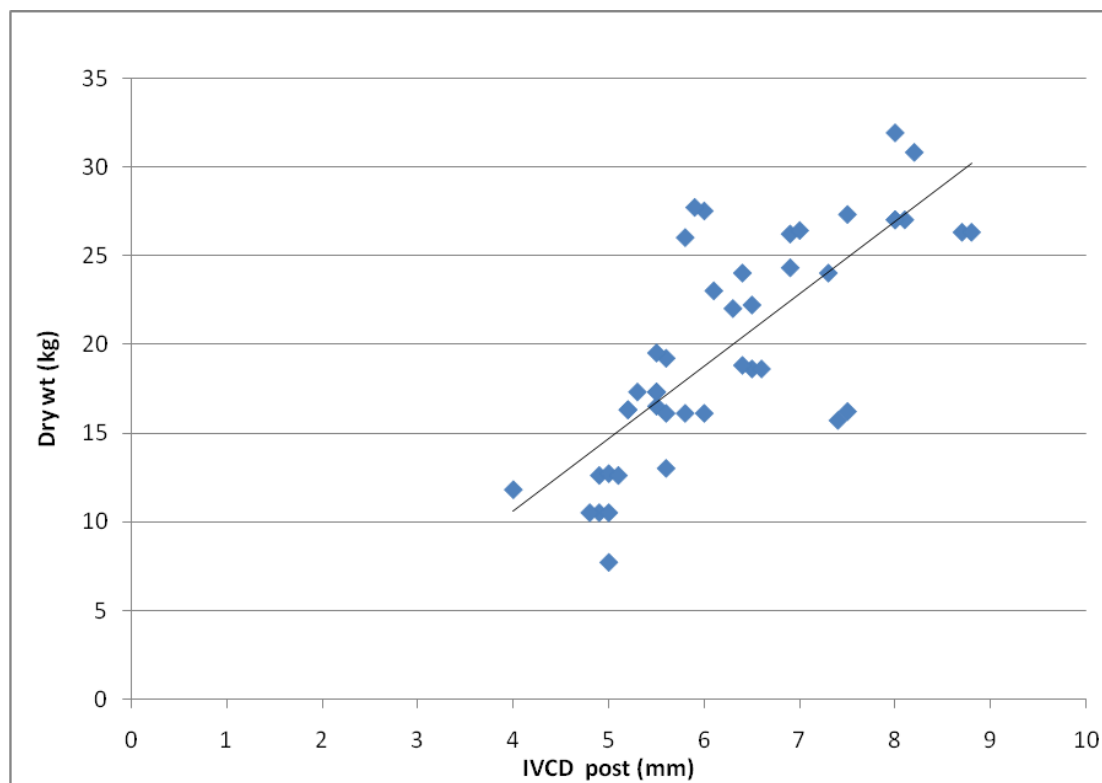
	IVCD post	
	(r)	P
IVCD pre	<b>.925<sup>**</sup></b>	<b>.000</b>
Dry Weight	<b>.773<sup>**</sup></b>	<b>.000</b>
Pre Weight	<b>.778<sup>**</sup></b>	<b>.000</b>
Post Weight	<b>.772<sup>**</sup></b>	<b>.000</b>
IVCD during	<b>.946<sup>**</sup></b>	<b>.000</b>
Pre SBP	<b>.310<sup>*</sup></b>	<b>.040</b>
Pre DBP	<b>.178</b>	<b>.247</b>
Dur SBP	<b>.206</b>	<b>.179</b>
Dur DBP	<b>.250</b>	<b>.101</b>
Post SBP	<b>.397<sup>**</sup></b>	<b>.008</b>
Post DBP	<b>.493<sup>**</sup></b>	<b>.001</b>

**Figure (11): Correlation Coefficient "r" between IVCD post and post weight of the studied group.**



IVCD post show + ve highly significant correlation with post weight ( $p < 0.01$ ) as shown in Figure (11).

**Figure (12): Correlation Coefficient "r" between IVCD post and dry weigh of the studied group.**



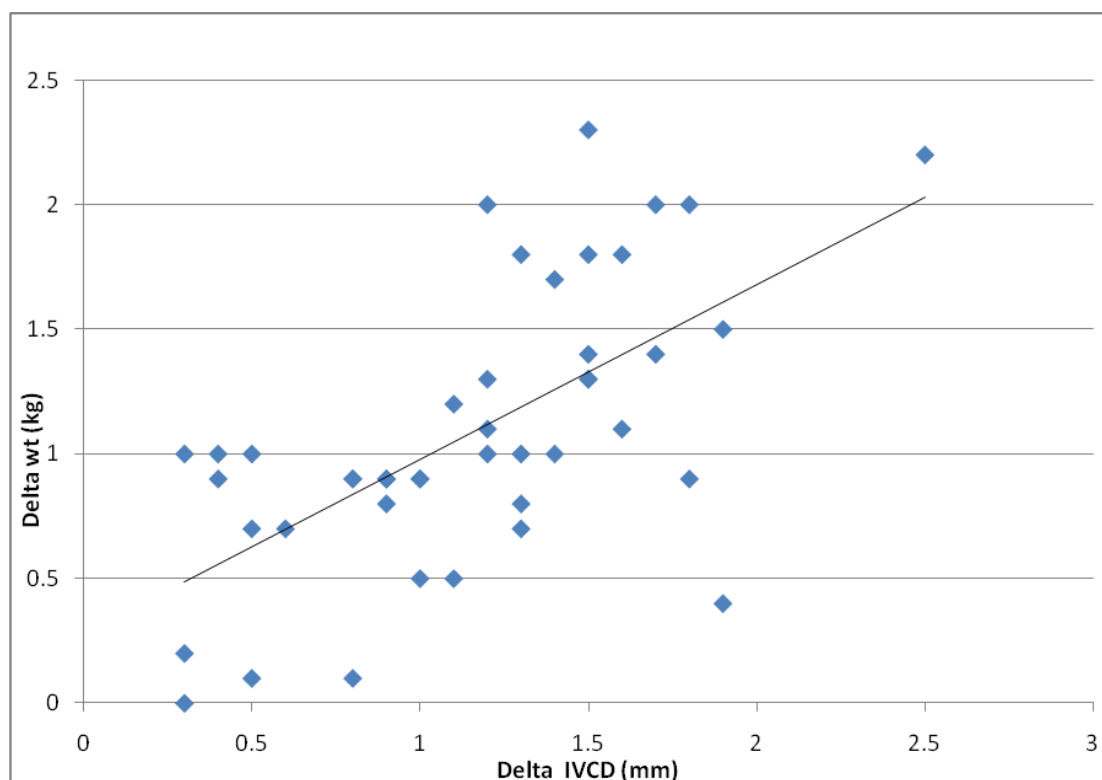
IVCD post show + ve highly significant correlation with dry weight ( $p < 0.01$ ) as shown in Figure (12).

**Table (13): Correlation between delta IVCD (pre minus post) & delta weight (pre minus post) of the studied group.**

	Delta IVCD	
	(r)	P
Delta wt	.634**	.000

This table shows a highly significant correlation between delta IVCD (pre - post) and delta weight (pre - post) of the studied group.

**Figure (13): Correlation between delta IVCD & delta weight of the studied group.**

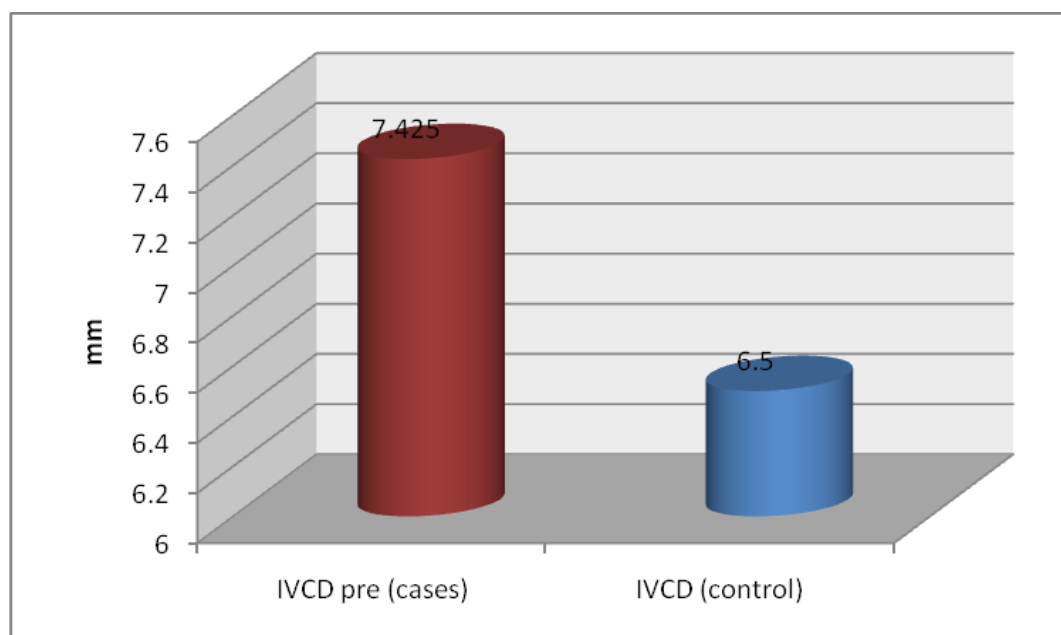


**Table (14): Comparison between IVCD pre of the studied group & IVCD of the control group.**

	Mean	S.D	t	P
IVCD pre (cases)	7.425	1.3335	3.4	<0.001
IVCD (control)	6.5	0.9		

This table shows that there is a highly significant statistical difference between the IVCD pre of the studied group in comparison with the IVCD of the control group.

**Figure (14): Comparison between IVCD pre of the studied group & IVCD of the control group.**



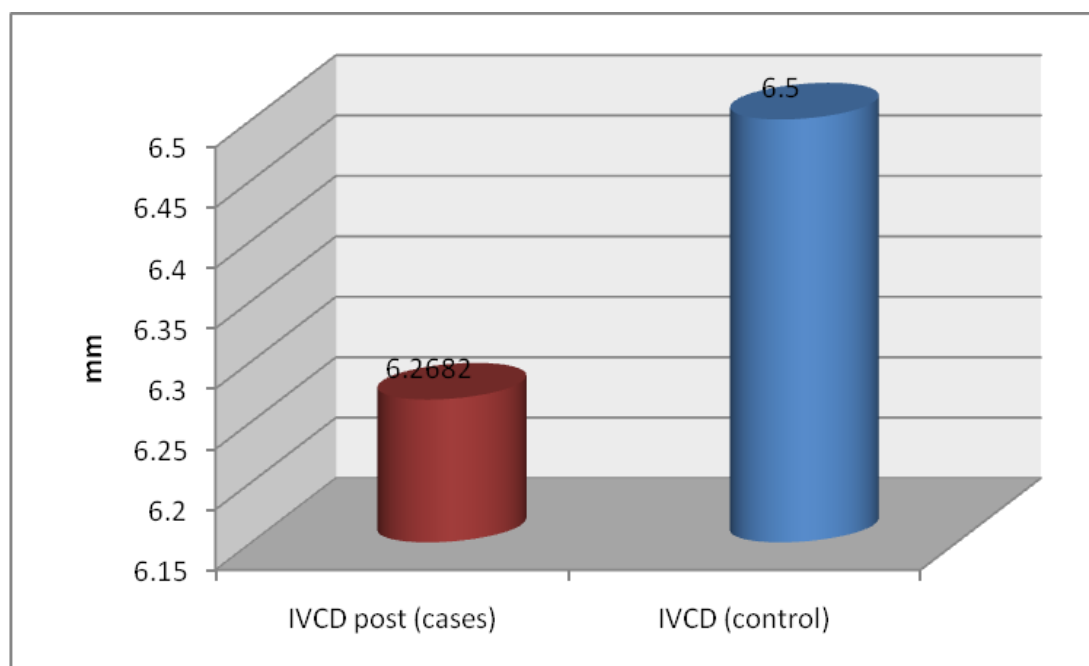


**Table (15): Comparison between IVCD post of the studied group & IVCD of the control group.**

	Mean	S.D	t	P
IVCD post (cases)	6.2682	1.18396	1.03	>0.05
IVCD (control)	6.5	0.9		

This table shows that there is no statistically significant difference between the IVCD posts of the studied group in comparison with the IVCD of the control group.

**Figure (15): Comparison between IVCD post of the studied group & IVCD of the control group.**



**Table (16): Correlation between IVCD pre & hemoglobin (gm/dl) of the studied group.**

	IVC pre	
	(r)	P
HB	-.235	.130

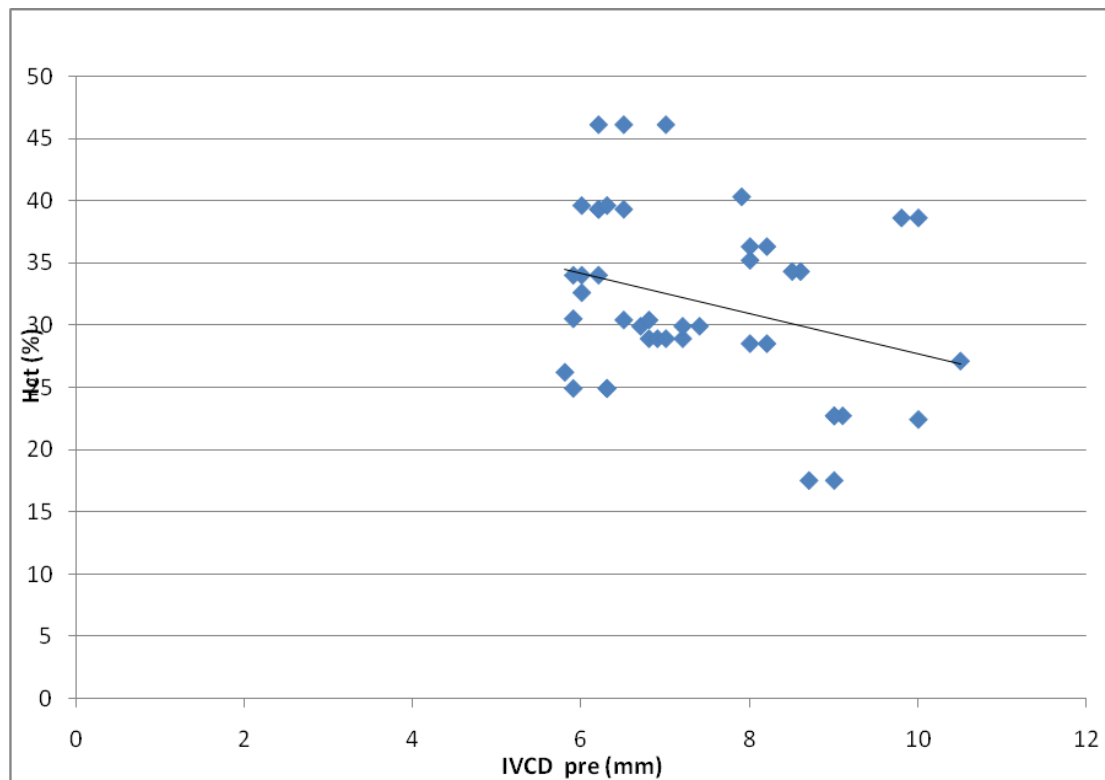
This table shows that there is no statistically significant correlation between IVCD pre and hemoglobin level of the study group.

**Table (17): Correlation between IVCD post & hemoglobin (gm/dl) of the studied group.**

	IVC post	
	(r)	P
HB	-.290	.059

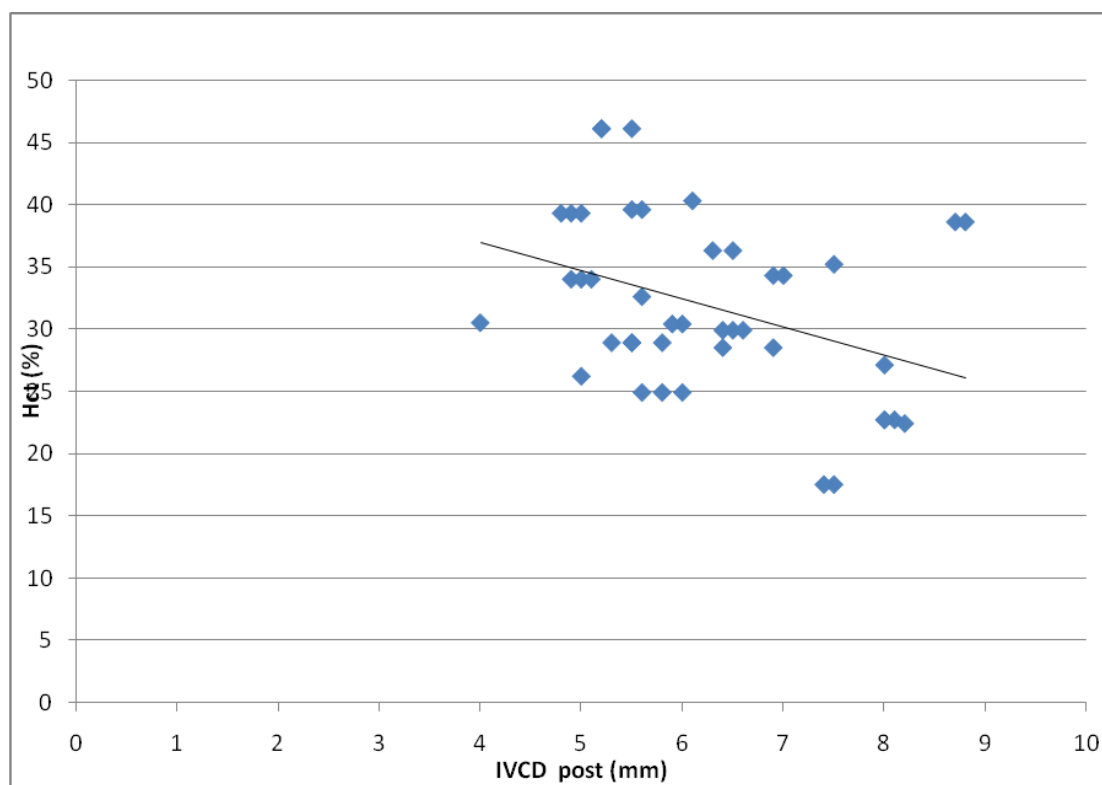
This table shows that there is no statistically significant correlation between IVCD post and hemoglobin level of the study group.

**Figure (16): Correlation between IVCD pre & hematocrit (%) of the studied group.**



IVCD pre shows –ve significant correlation with hematocrit (%) ( $P < 0.05$ ) as shown in figure (18).

**Figure (17): Correlation between IVCD post & hematocrit (%) of the studied group.**



IVCD post shows –ve significant correlation with hematocrit (%) ( $P < 0.05$ ) as shown in figure (19).