

Results

Sixty Participant included in this study and was divided in to two groups each has 30 pregnant ladies in active stage of labour.All Participant complete the study.

(Table 1) The Patient characteristics of both groups

	CONTROL GROUP n =30	TEST GROUP n =30	P VALUE
Maternal age (year)	29.60 \pm 6.97	28.90 \pm 6.99	0.95
Gestational age (weeks)	39.30 \pm 1.02	39.20 \pm 1.10	0.71
Cervical dilation at admission (cm)	4.53 \pm 1.14	4.50 \pm 0.97	0.99

- ❖ There was no statistically significant difference ($P = 0.95$) between the mean age for the test group which was (28.90 \pm 6.99) and the mean age for the control group (29.60 \pm 6.97).
- ❖ Also, no statistically significant difference ($P = 0.71$) could be detected between both groups as regards Gestational age (weeks) by using unpaired t-test.Mean Gestational age (weeks) for test group was (39.20 \pm 1.10) and the mean gestional age (weeks) for control group was (39.30 \pm 1.02).

- ❖ Also, there was no statistically significant difference ($P = 0.99$) could be detected between both groups as regards cervical dilatation.
- ❖ Mean cervical dilatation for test group was (4.50 ± 0.97) and the mean cervical dilatation for control group was (4.53 ± 1.14) .

(Table 2) Serum B-Endorphin level pg/ml among both groups before and after stimulation.

B Endorphin level pg/ml	Control Group N=30	Test Group N=30	P value
Before stimulation	83.10 \pm 7.73	83.73 \pm 7.64	0.75 [*]
After stimulation	112 \pm 2.42	120.03 \pm 2.28	0.032 ^{**}

* No significant difference between both groups (electro-acupuncture group and control group) in B endorphin concentration in the peripheral blood.(P value 0.75)

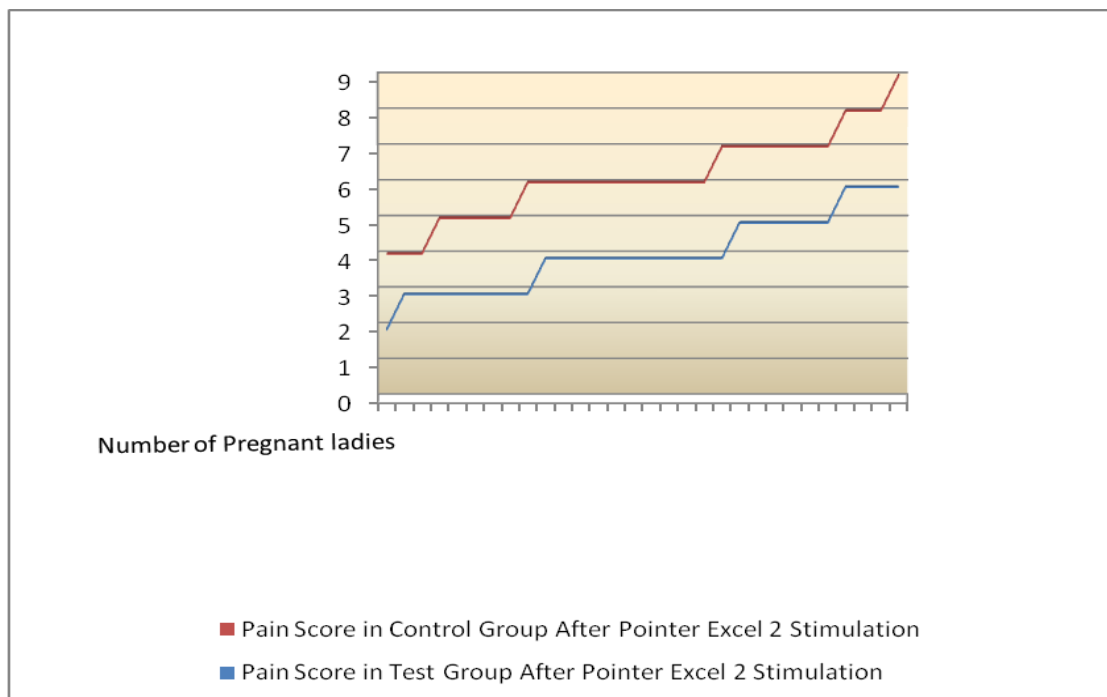
** There is a significant difference P value 0.032 after stimulation by Pointer Excel 2.

(Table 3) Pain score among both groups

Pain Score	Control Group n=30	Test Group n=30	P Value
Before Stimulation	5.87 \pm 1.22	5.63 \pm 1.35	0.49*
After Stimulation	6.17 \pm 1.23	4.13 \pm 1.07	0.001**

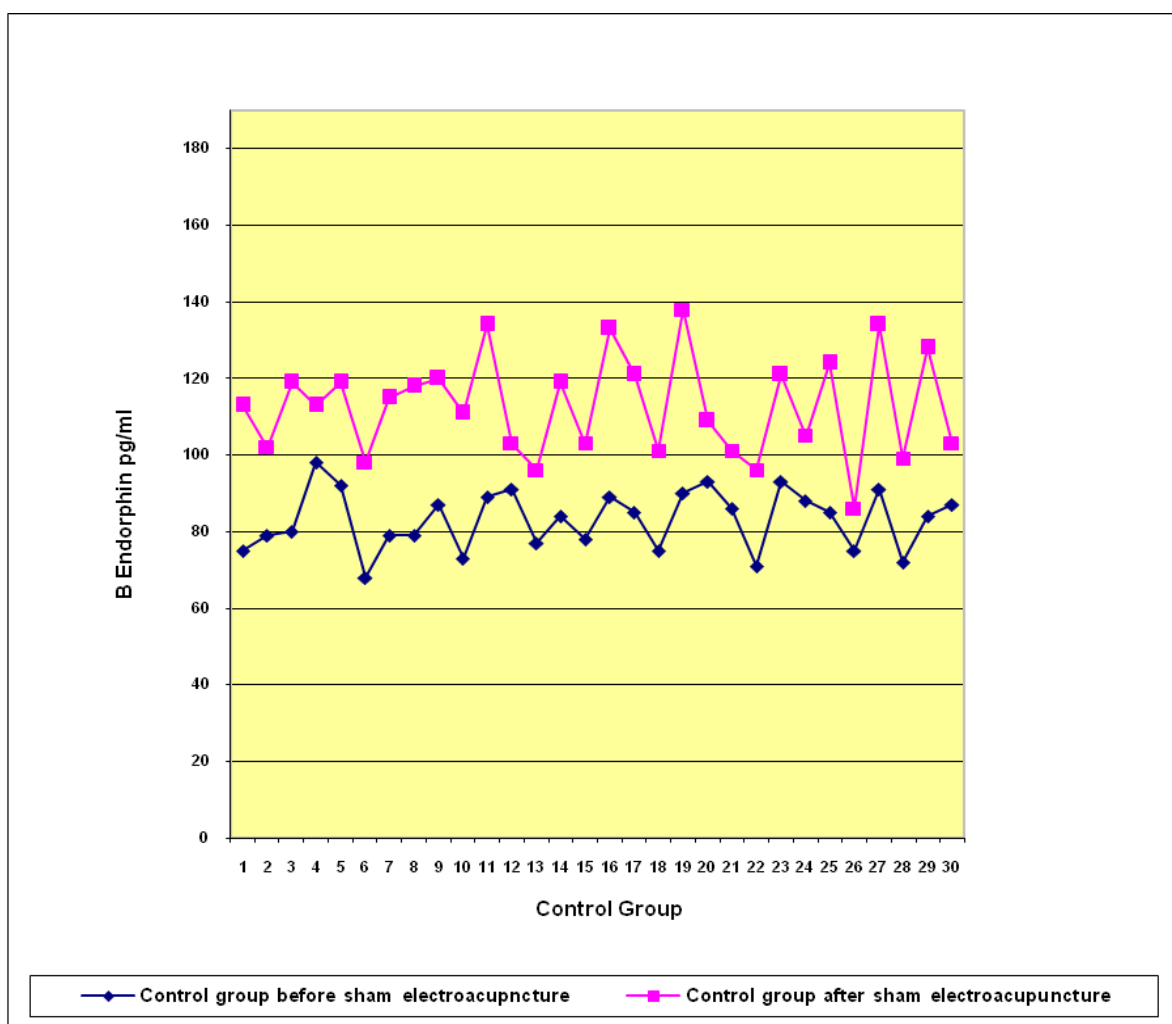
* There was no Significant differences between both groups, regarding pain score assessment before Pointer Excel 2 stimulation (P value 0.49).

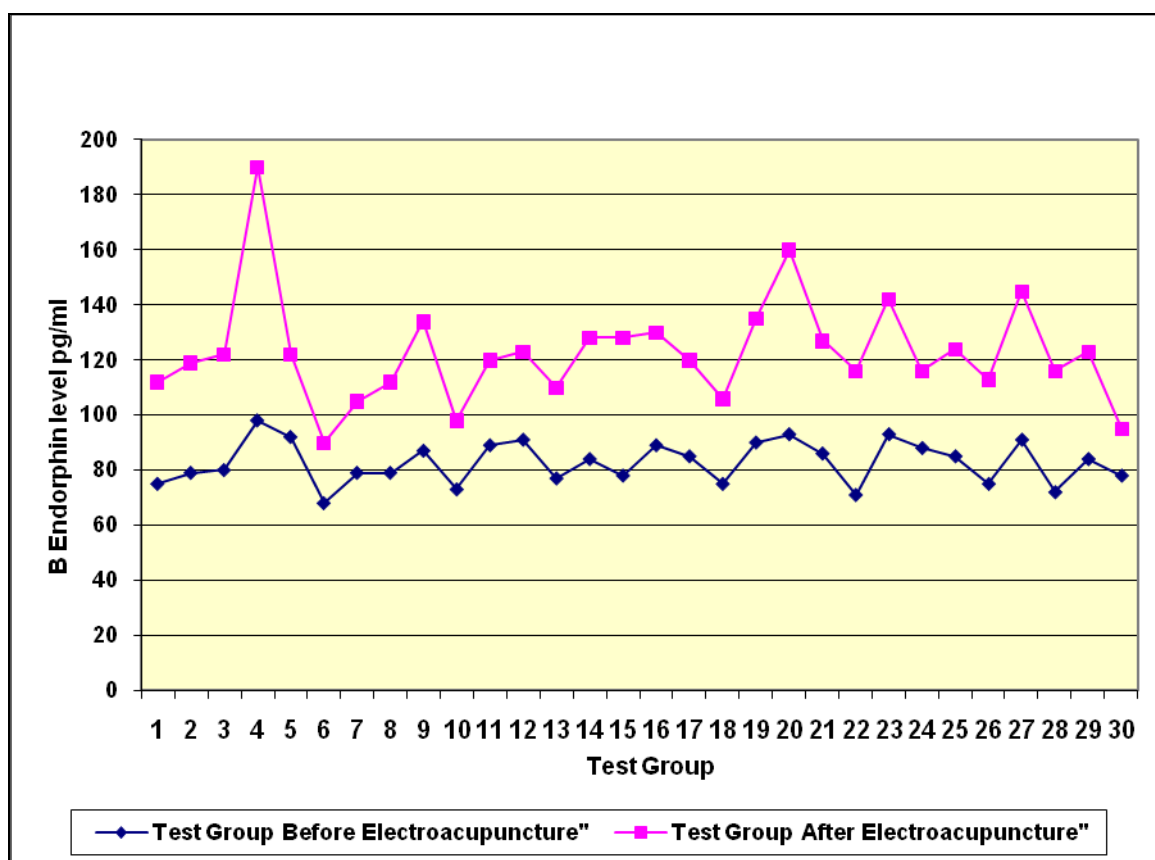
** There was significant difference in pain score after stimulation (P value 0.001).



Comparison of Pain Score Between, Both Groups After Pointer Excel 2 stimulation

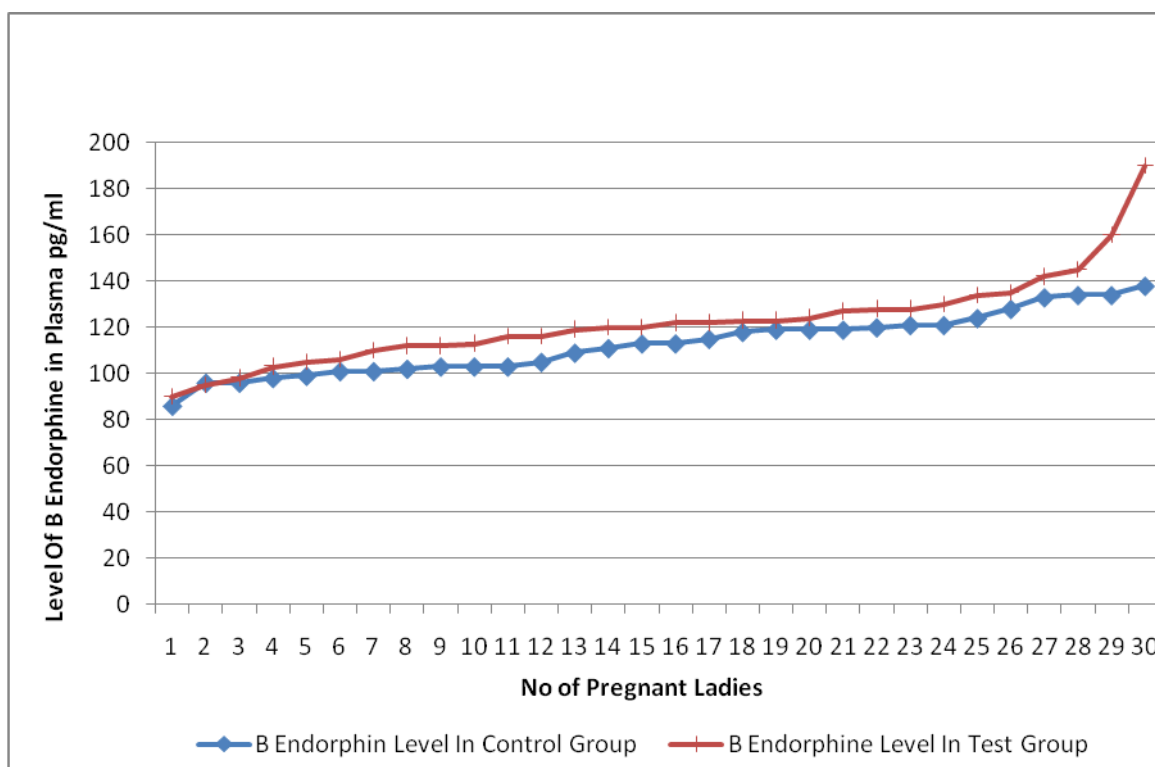
Figure 19





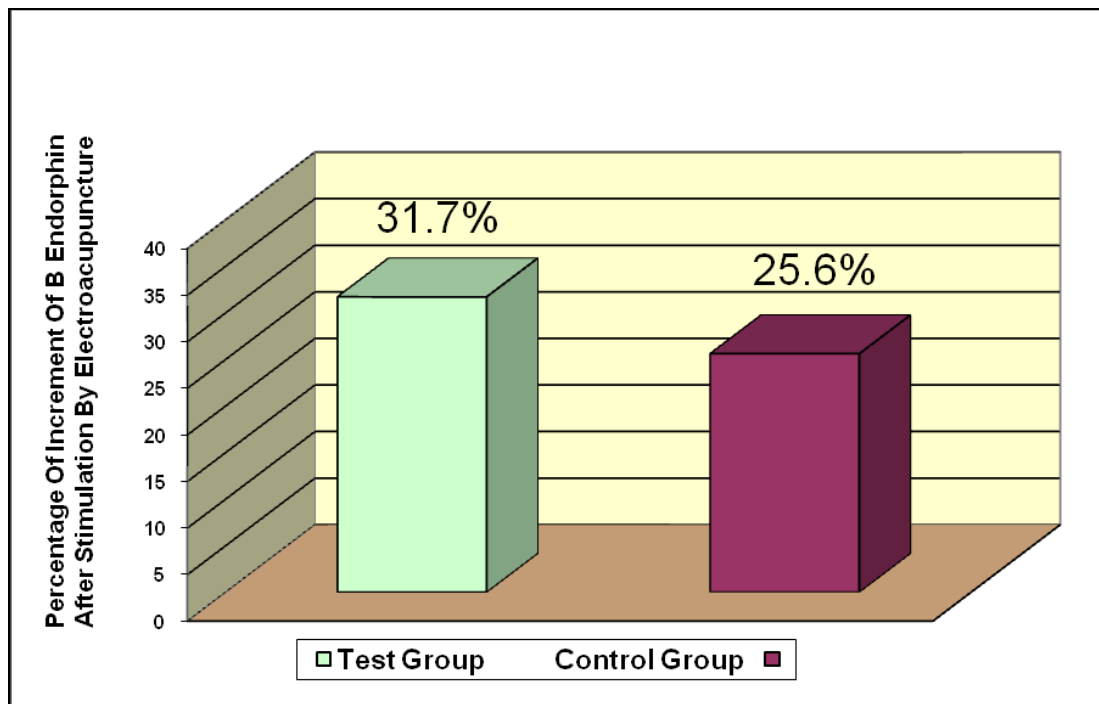
B Endorphin level Before and After Stimulation In Test Group

Figure 21



Comparison Between B Endorphin Level After Stimulation In Test And Control Group

Figure 22



**Comparison of Percentage of Increment of B Endorphin
Between Test and Control Group**

Figure 23