

## RESULTS

The collected data used for comparison between PCOS group and control group includes patients characteristics and ultrasound measurements were tabulated and shown in figures.

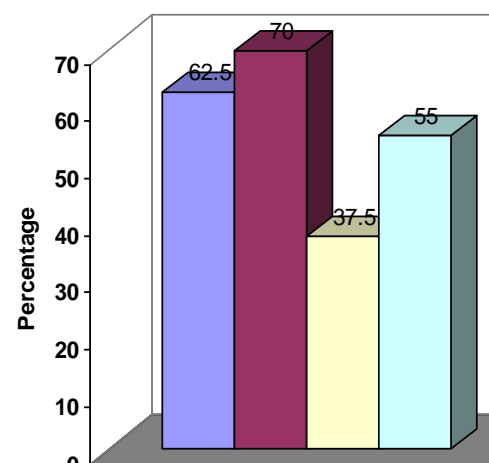
- **Patient characteristics:**

Regarding the study group (PCOS) as diagnosed according to the Rotterdam criteria, of these 40 patients, 10 (25%) were ovulatory hyperandrogenic women with PCOs on the 2 D ultrasound picture, 8 (20%) were anovulatory normoandrogenic women with PCOs by US and the remaining 22 (55%) were anovulatory hyperandrogenic women with or without PCOs by US. Among the 32 women with clinical and/or biochemical hyperandrogenism, 28(70%) were hirsute while 15(37.5%) suffered from acne. Also about 25 women(62.5%) have oligohypomenorrhea and 22 women(55%) have a reversed LH: FSH ratio .

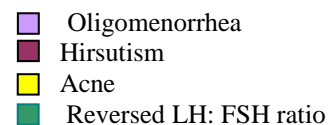
- **Table (1):**

Clinical and laboratory characteristics of PCOS group:

Variable	PCO group	
	No.	%
Oligomenorrhea	25	62.5
Hirsutism	28	70.0
Acne	15	37.5
Reversed LH:FSH ratio	22	55.0



- **Figure(1):**



- **Table (2):**

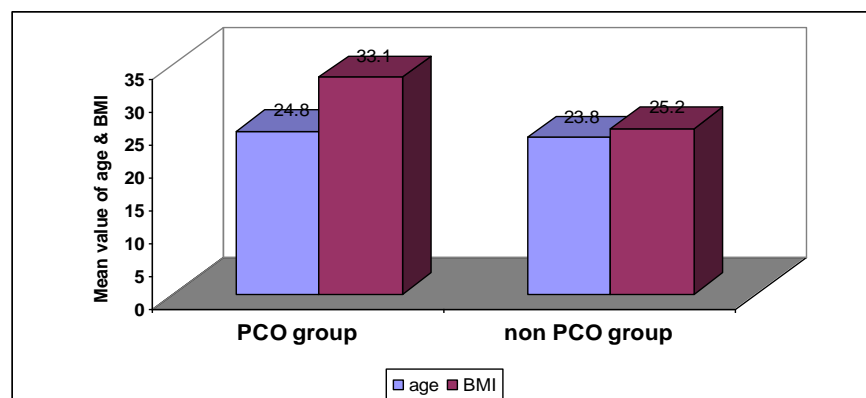
Comparison between PCO and control groups regarding the age and BMI(Body Mass Index):

Group Variable	PCO group	control group	"t"	P
<b>Age (years)</b>				
Range	(21-30)	(18-32)		
Mean $\pm$ SD	24.8 $\pm$ 2.6	23.8 $\pm$ 4.2	1.22	>0.05
<b>BMI (Kg\m<sup>2</sup>)</b>				
Range	(27-40)	(22-30)		
Mean $\pm$ SD	33.1 $\pm$ 4.4	25.2 $\pm$ 2.9	9.5	<0.001*

The mean BMI of PCOS group was significantly higher than the control group(  $p$  value <0.001) but there were no significant differences in the mean ages between both groups (  $p > 0.05$ ).

\*SD : standard deviation

- **Figure (2):**



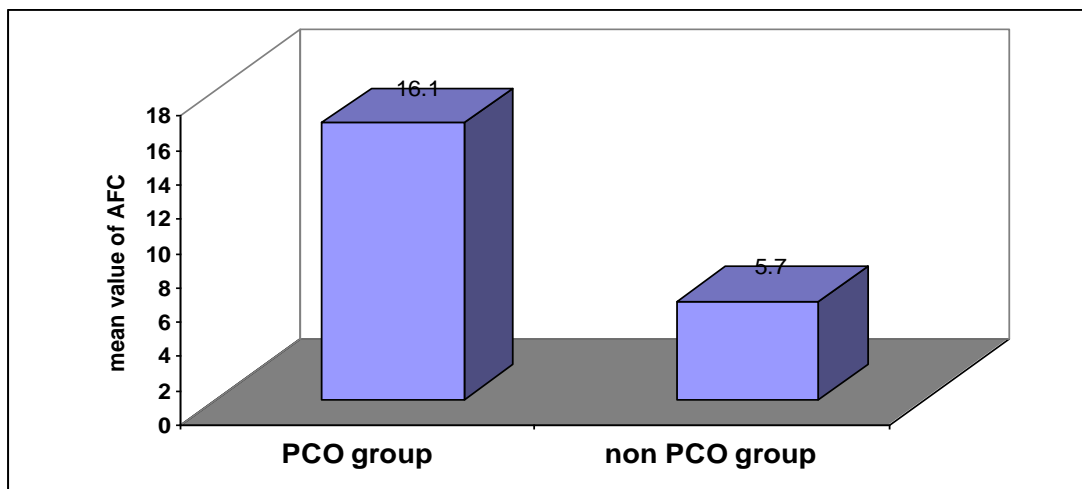
- **Ultrasound measurements:**
- **Table (3):**

Comparison between PCO and control groups regarding Antral Follicle Count( AFC) as measured by 2 D ultrasound:

Group Variable	PCO group	control group	"t"	P
Range(follicle)	(9-30)	(2-10)		
Mean $\pm$ SD	16.1 $\pm$ 5.3	5.7 $\pm$ 2.2	11.5	<0.001*

The mean AFC of PCOS group was significantly higher than the control group(  $p$  value <0.001) .

- **Figure (3):**



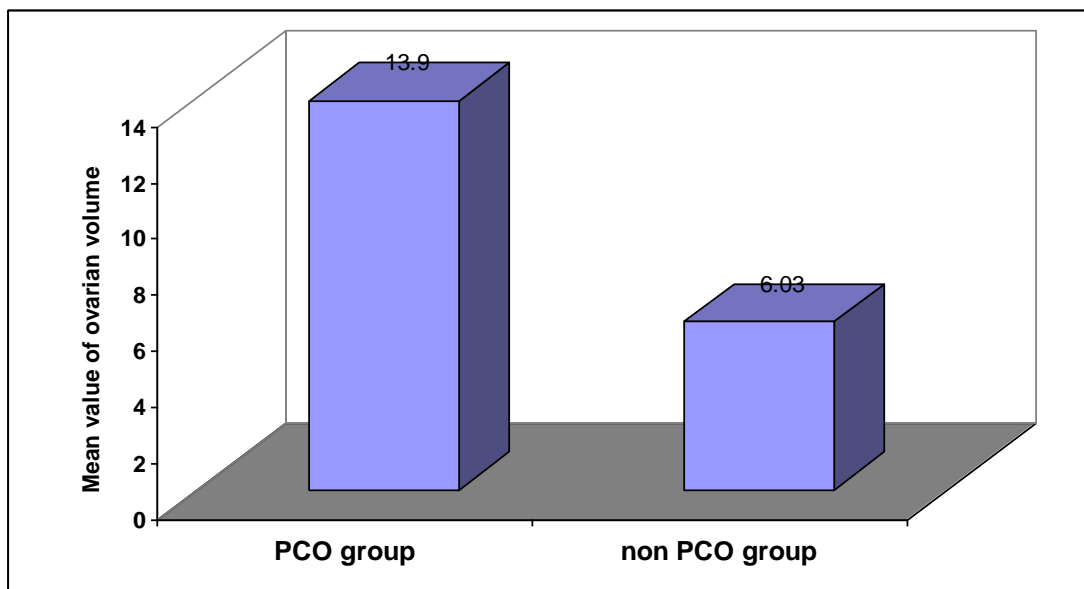
• **Table (4):**

Comparison between PCO and control groups regarding the total ovarian volume measured by VOCAL program (3 D ultrasound) :

<b>Group</b> <b>Variable</b>	<b>PCO group</b>	<b>control group</b>	<b>"t"</b>	<b>P</b>
Range(cm <sup>3</sup> )	(9.08-22.31)	(2.51-10.03)		
Mean $\pm$ SD	13.9 $\pm$ 3.54	6.03 $\pm$ 2.18	11.9	<0.001*

The mean total ovarian volume of PCOS group was significantly higher than the control group(  $p$  value <0.001) .

• **Figure (4):**



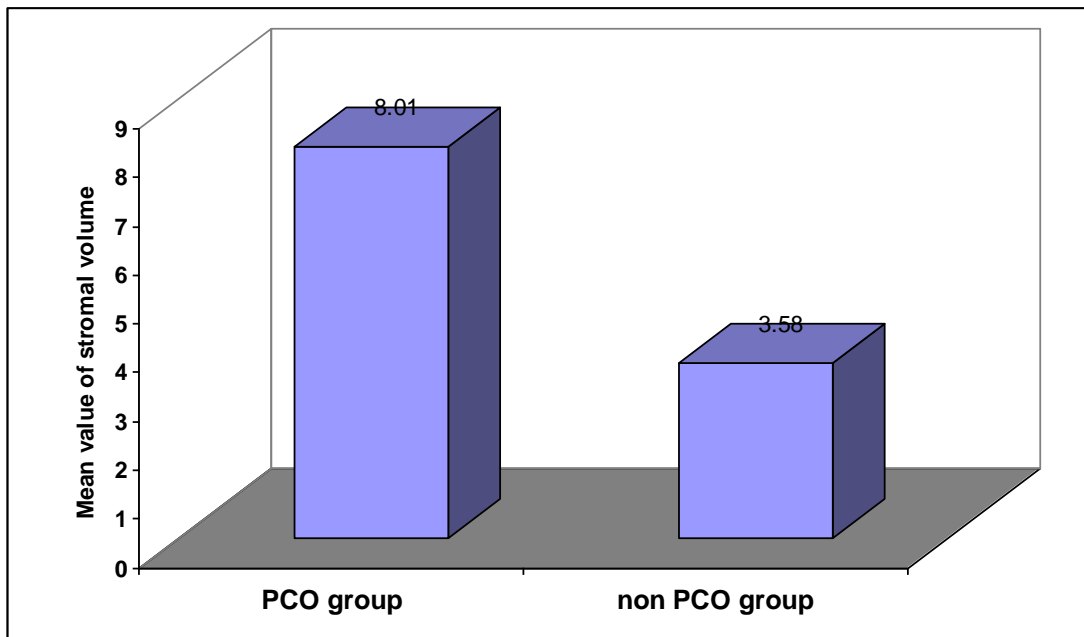
• **Table (5):**

Comparison between PCO and control groups regarding the stromal volume measured by subtraction of the follicular volumes( obtained by sono AVC program) from the total ovarian volume:

Group Variable	PCO group	control group	"t"	P
Range(cm <sup>3</sup> )	(3.72-15.62)	(1.14-7.76)		
Mean $\pm$ SD	8.01 $\pm$ 2.94	3.58 $\pm$ 1.84	8.08	<0.001*

The mean stromal volume of PCOS group was significantly higher than the control group(  $p$  value <0.001) .

• **Figure (5):**



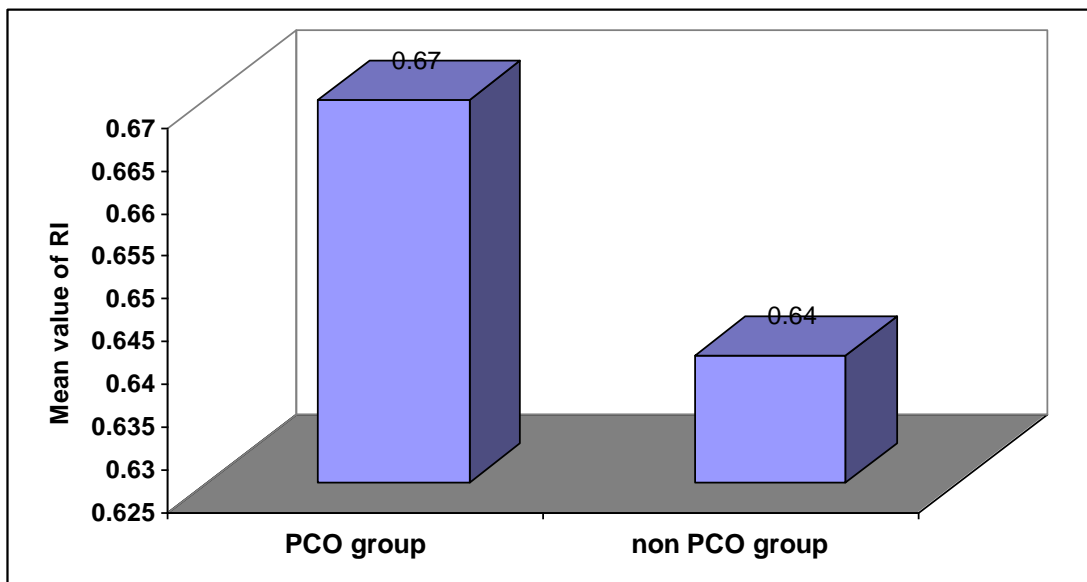
• **Table (6):**

Comparison between PCO and control groups regarding the Resistance Index of the main ovarian stromal vessels (RI) as measured by pulsed wave Doppler( 2 D Doppler ultrasound):

<b>Group Variable</b>	<b>PCO group</b>	<b>Control group</b>	<b>"t"</b>	<b>P</b>
Range	(0.49-0.97)	(0.22-2.6)		
Mean $\pm$ SD	0.67 $\pm$ 0.11	0.64 $\pm$ 0.48	0.39	>0.05(NS)

The Resistance Index of the main ovarian stromal vessels (RI) of PCOS group was statistically non significant compared to the control group(  $p > 0.05$  value).

• **Figure (6):**



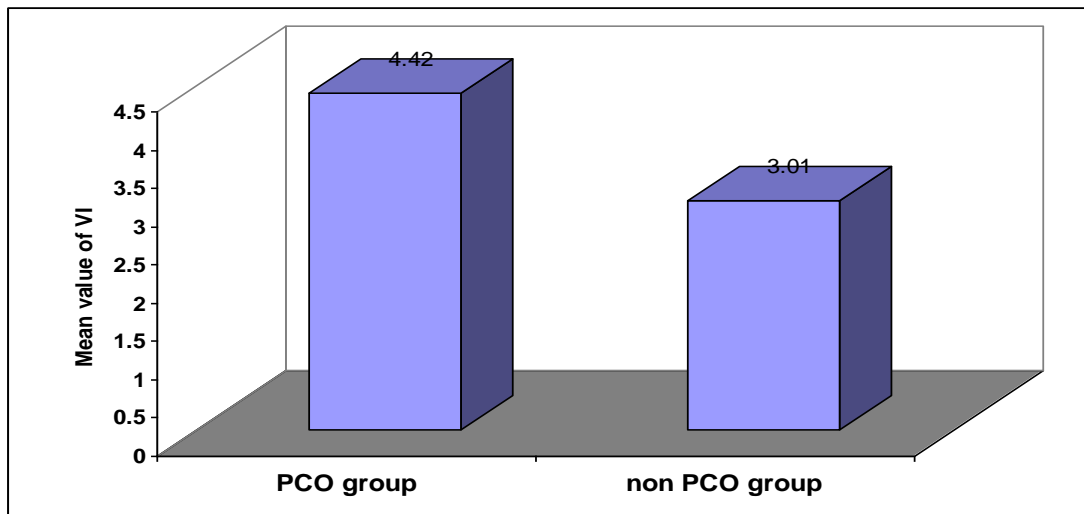
• **Table (7):**

Comparison between PCO and control groups regarding Vascularization Index (VI) measured by using Three-Dimensional power Doppler ultrasonography:

<b>Group Variable</b>	<b>PCO group</b>	<b>control group</b>	<b>"t"</b>	<b>P</b>
Range(%)	(1.02-7.22)	(0.66-6.68)		
Mean $\pm$ SD	4.42 $\pm$ 1.74	3.01 $\pm$ 1.87	3.49	0.001*

The mean Vascularization index was higher among cases of PCOS compared to control group with a statistical significant difference in between them ( $P < 0.001$ ).

• **Figure (7):**



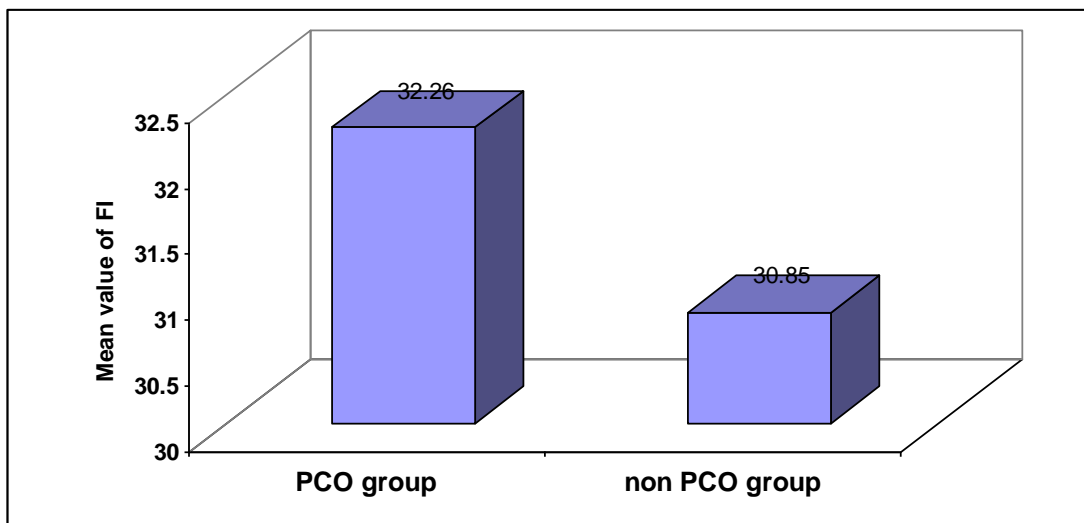
• **Table (8):**

Comparison between PCO and control groups regarding Flow Index (FI) measured by using Three-Dimensional power Doppler ultrasonography:

<b>Group Variable</b>	<b>PCO group</b>	<b>control group</b>	<b>"t"</b>	<b>P</b>
Range	(20.99-50.6)	(20.23-49.83)		
Mean $\pm$ SD	32.26 $\pm$ 7.43	30.85 $\pm$ 8.69	0.78	>0.05(NS)

The mean flow index was statistically non significant among cases of PCOS compared to control group ( $P > 0.05$ ).

• **Figure (8):**





• **Table (9):**

Comparison between PCO and control groups regarding Vascularization Flow Index ( VFI) measured by using Three-Dimensional power Doppler ultrasonography:

<b>Group Variable</b>	<b>PCO group</b>	<b>control group</b>	<b>"t"</b>	<b>P</b>
Range	(0.85-4.12)	(0.33-2.44)		
Mean $\pm$ SD	2.51 $\pm$ 1.04	1.19 $\pm$ 0.72	6.54	<0.001*

The mean Vascularization Flow index was higher among cases of PCOS compared to control group with a statistical significant difference in between them ( $P < 0.001$ ).

• **Figure (9):**

