

Results

Table (4) Adverse events among the study group

Adverse events	No	%
1- Indurations	7	3.5
2- Papule	40	20
3- Pustule	10	5
4- superficial ulcer	2	1
5- Scab	8	4
6- Scar	108	54
7- Adenitis	15	7.5
8- No reaction	10	5
Total	200	100.0

Table (4): The different stages of BCG scar formation BCG reaction on the left arm of infants in the study group with BCG reactogenicity (n = 200) were as follows.

- induration 7 subjects (3.5%)
- Papule 40 subjects (20%)
- Pustule 10 subjects (5%)
- Superficial ulcer 2 subject (1%).
- Scab 8 subject (4%)
- Scar 108 subject (54%).
- Adenitis 15 subject (7.5%).
- No reaction 10 subject (5%)

Chart (1) advrse events among the study groups

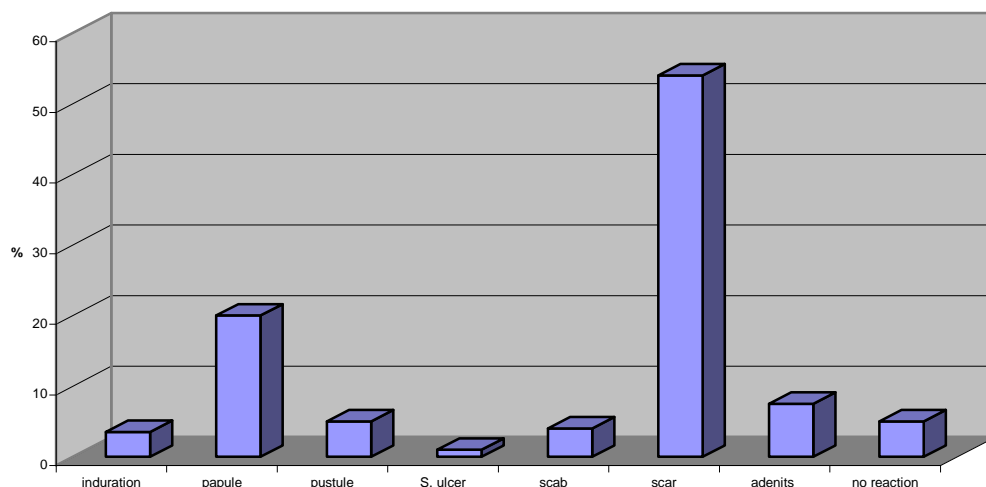


Fig. (2) Adverse events among the study groups

Table (5): Adverse events according to sex

Sex \ Adverse events	Yes		No		Total		Z	P
	No	%	No	%	No	%		
1- males	107	56.3	6	60.0	113	56.5	0.15	>0.05
2- Females	83	43.7	4	40.0	87	43.5	0.17	>0.05
Total	190	100.0	10	100.0	200	100.0		

Table (5): The total number of study group was a cohort of 200 infants 113 of whom (56.15%) were males and 87 infants (43.5%) were females as shown above.

Chart (2) adverse events according to sex

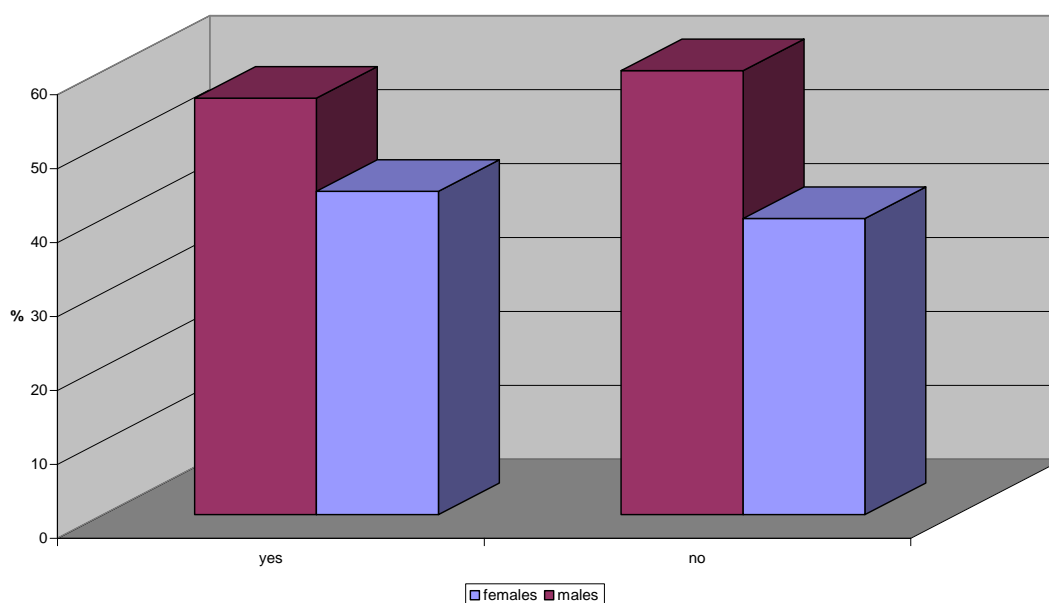


Fig. (3) Adverse events according to sex

Table (6) Adverse events according to mother education

Adverse events Mother education	Yes		No		Total		Z	P
	No	%	No	%	No	%		
1- Illiterate	35	18.4	3	30.0	38	19.0	0.82	>0.05
2- Read & Write	4	2.1	1	10.0	5	2.5	1.54	>0.05
3- Basic	21	11.1	1	10.0	22	11.0	0.1	>0.05
4- Secondary	86	45.3	4	40.0	90	45.0	0.24	>0.05
5- High	44	23.1	1	10.0	45	22.5	0.85	>0.05
Total	190	100.0	10	100.0	200	100		

Table (6): the mother's level of education of the study group was that 38 mothers (19%) were illiterate while 5 (2.5%) can read of write 22 (11%) had basic education 90 (45%) had secondary education and 45 (22.5%) with university degree as above.

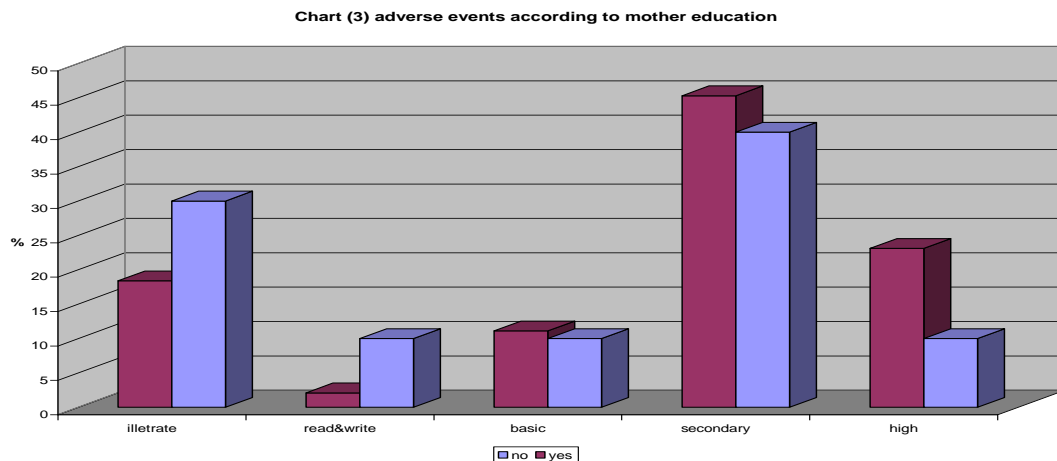


Fig. (4) Adverse events according to mother education

Table (7) Adverse events according to socioeconomic factors

Adverse events Socio-economic	Yes		No		Total		Z	P
	No	%	No	%	No	%		
1- Low	70	36.8	5	50.0	75	37.5	0.66	>0.05
2- Moderate	116	61.1	5	50.0	121	60.5	0.44	>0.05
3- high	4	2.1	0	0.0	4	2.0	0.46	>0.05
Total	190	100.0	10	100.0	200	100.0		

Table (7): According to the district of residence the demographic description was that 75 infants (37.5) of the study group lived in alow socioeconomic area, 121 infants (60.55) lived in a moderate socio economic area but 4 infants lived in high socio economic level.

Chart (4) adverse events according to socioeconomic factors

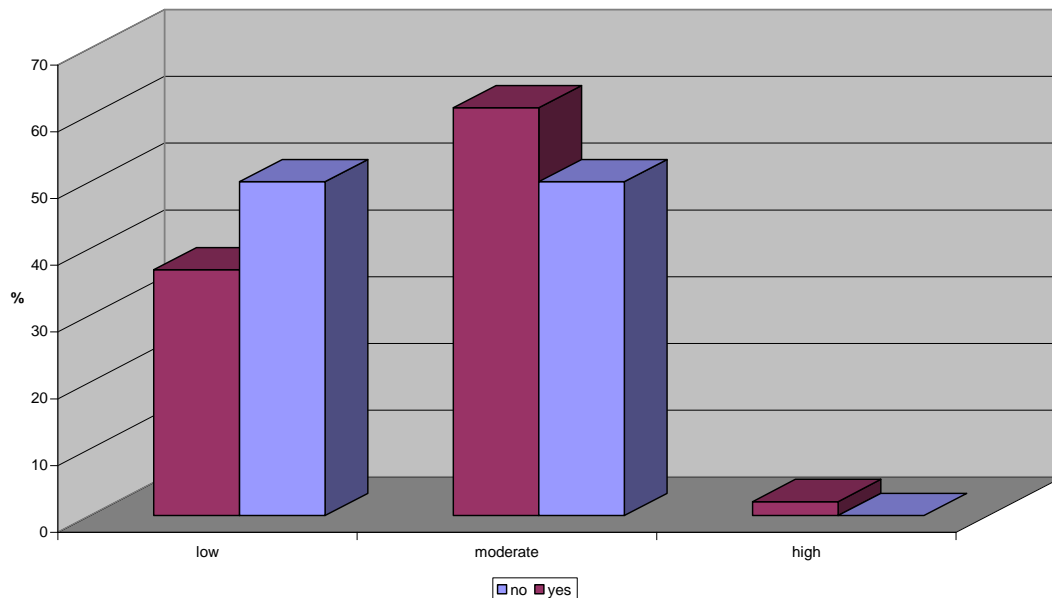


Fig. (5) Adverse events according to socio economic factors

Table (8) Adverse events according to feeding since birth

Adverse events Feeding since birth	Yes		No		Total		Z	P
	No	%	No	%	No	%		
1- Breast	135	71.1	7	70.0	142	71.0	0.78	>0.05
2- Artificial	9	4.7	0	0.0	9	4.5	0.7	>0.05
3- Mixed	46	24.2	3	30.0	49	24.5	0.36	>0.05
Total	190	100.0	10	100.0	200	100.0		

Table (8): out of the 200 infants of the study group the parents/ guardians of infants were able to give accurate information regarding the infants type of feeding 142 infants (71%) were breast fed only 9 infants (4.5%) were artificial and 49 infant (24.5%) were mixed fed.

Chart (5) adverse events according to feeding since birth

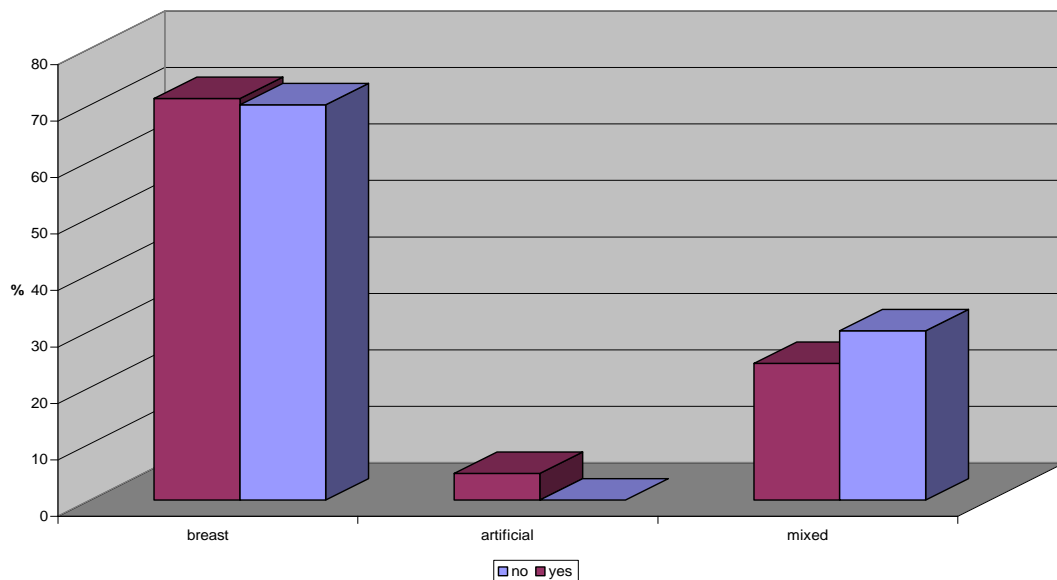


Fig. (6) Adverse events according to feeding since birth

Table (9) Adverse events according to feeding till vaccine attain.

Adverse events Feeding events till vaccination	Yes		No		Total		Z	P
	No	%	No	%	No	%		
1- Breast	135	71.1	7	70.0	142	71.0	0.78	>0.05
2- Artificial	9	4.7	0	0.0	9	4.5	0.7	>0.05
3- Mixed	46	24.2	3	30.0	49	24.5	0.36	>0.05
Total	190	100.0	10	100.0	200	100.0		

Table (9): out of the 200 infants of the study group the parents/ guardians of infants were able to give accurate information regarding the infants type of feeding 142 infants (71%) were breast fed only 9 infants (4.5%) were artificial and 49 infant (24.5%) were mixed fed.

Chart (5) adverse events according to feeding since birth

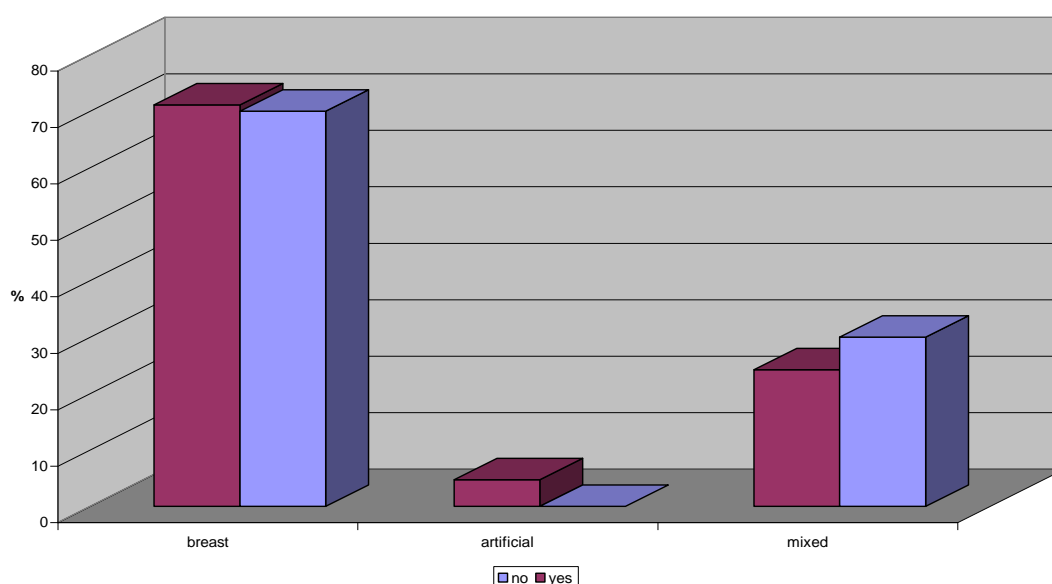


Fig. (7) Adverse events according to feeding till vaccine attain

Table (10) Means (\bar{X}) \pm standard deviations (SD) of gestational age according to adverse events among the study group

Gestation age Adverse events	Range	$\bar{X} \pm SD$	t	P
1- Yes (n=190)	32 - 43	38.6 \pm 1.8	1.5	>0.05
2- No (n=10)	37 - 41	39.2 \pm 1.2		

Table (10): This table illustrate that the mean of gestational age among cases with adverse events is lower than that among cases with out adverse events (33.6 \pm 1.8 & 39.2 \pm 1.2) respectively but this difference is statistically in significant (P >.05).

Table (11) Means (\bar{X}) \pm standard deviations (SD) of birth weight according to adverse events

Birth weight Advances events	Range	$\bar{X} \pm SD$
1- Yes (n=190)	1.5 - 5	3.3 \pm 0.63
2- No (n=10)	2 - 3.9	3.3 \pm 0.6

Table (11): This table illustrate that the mean of birth weight among cases with adverse events is equal that among cases without adverse events (3.3 \pm 0.63).

Table (12) Means (\bar{X}) \pm standard deviations (SD) of age on vaccination among the study group

Age on Vaccination	Range	$\bar{X} \pm SD$	T	P
Adverse events				
1- Yes (n=190)	1 – 36	8.6 ± 5.7	0.59	>0.05
2- No (n=10)	4 – 17	7.8 ± 4.1		

Table (12): This table illustrate that the mean of age on vaccination among cases with adverse events is higher than that among cases without adverse events (8.6 ± 5.7) & (7.8 ± 4.1) respectively but this difference is statistically in significant ($P > 0.05$).

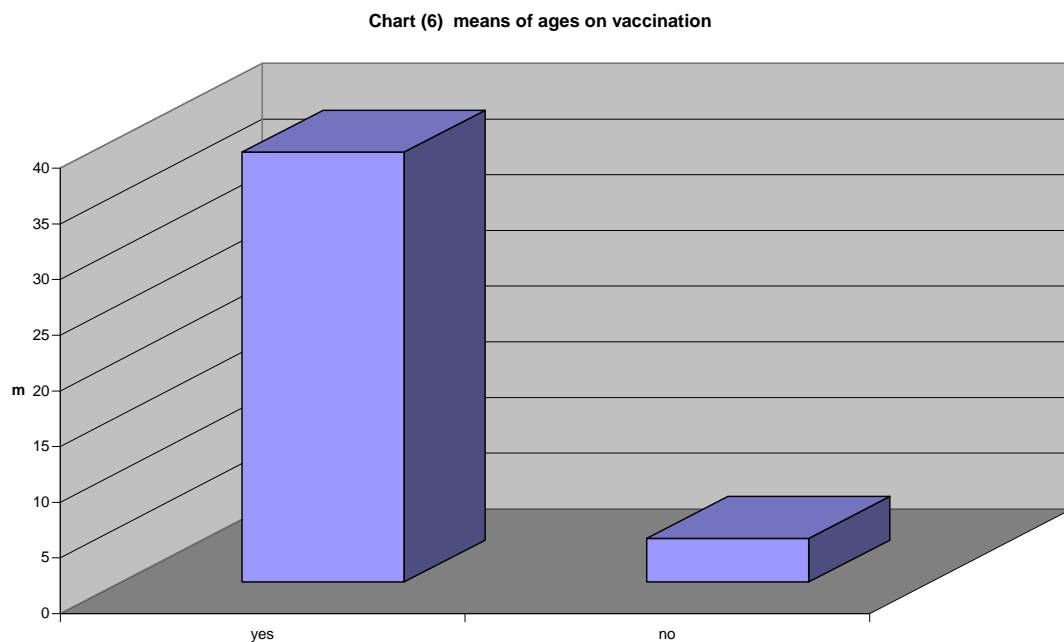


Fig. (8) Mean of ages on vaccination.