

RESULTS

RESULTS

The values of the procoagulant activity were obtained from a total number of 87 patients and 21 persons as a control group.

The results of the procoagulant activity was illustrated in seven tables according to the serial dilution of cells and the concentration of procoagulant factor.

Procoagulant activity of the control group: (Table 4)

In the first tube, the mean value of procoagulant concentration was 1.198 units (+ 1.733).

In the second tube, the mean value was found to be 1.104 units (+ 1.581).

In the third tube, the mean value was 0.890 units (+ 1.276).

In the fourth tube, the mean value was 0.388 units (+ 0.527).

In the fifth tube, the mean value was 0.299 units (+ 0.343).

In the sixth tube, the mean value was 0.219 units (+ 0.272).

In the seventh tube, the mean value was 0.191 units (+ 0.311).

The mean values of procoagulant concentration

[illegible]

(spoglaw pue TeTiaqsm aas)

The procoagulant activity of the CLL patients: (Table 5)

Twenty cases of CLL were included and showed the following results. (table V 5) (Fig. 5).

The mean in the first tube was 0.242 units (+ 0.330). Comparing this to that of control group it was found to be significantly low $P < 0.02$.

In the second tube, the mean value was 0.168 units (+ 0.226). The P was < 0.02 .

In the third tube, the mean value was 0.136 units (+ 0.143). P was < 0.02 .

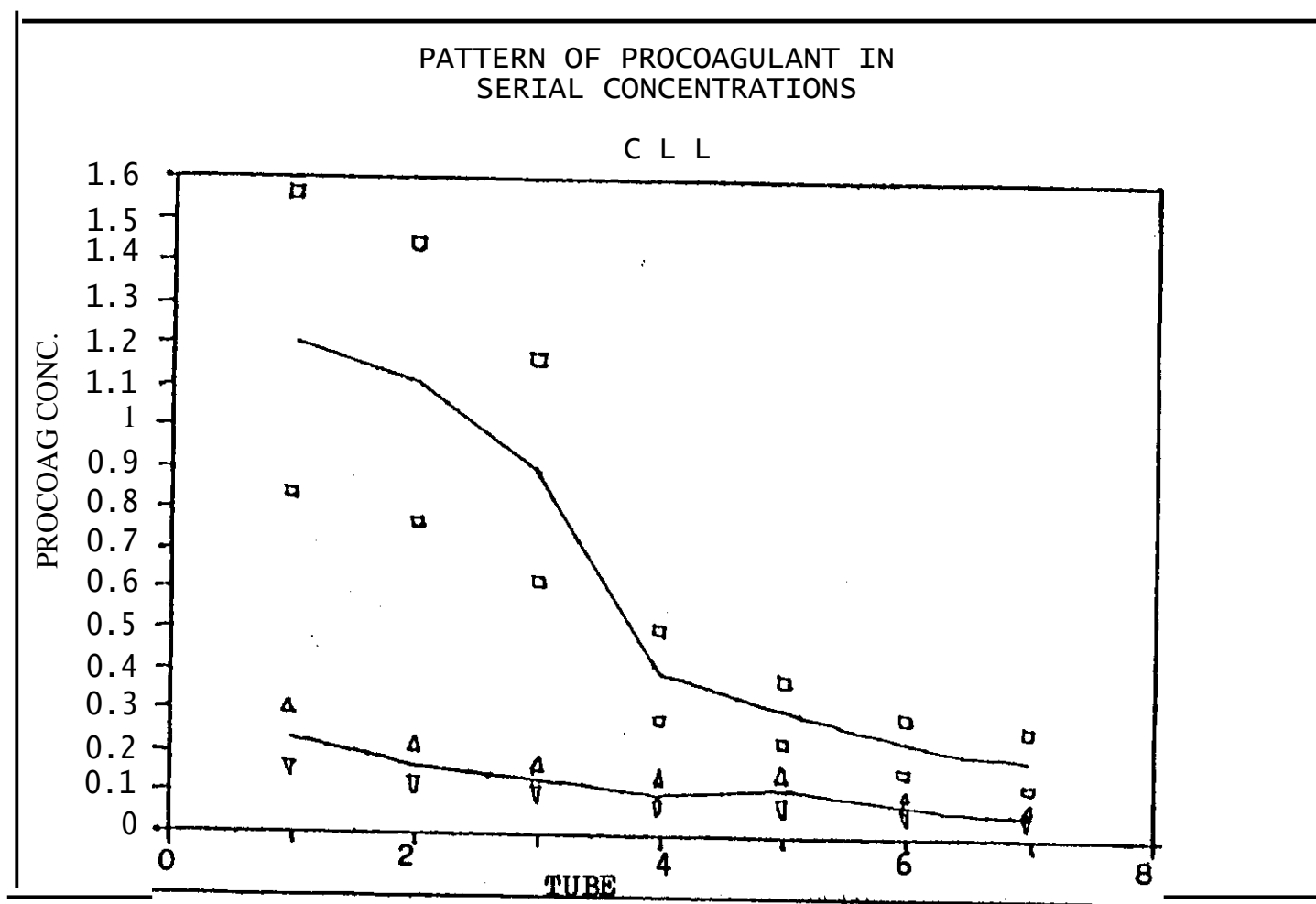
In the fourth tube, the mean value was 0.097 units (+ 0.099). P was < 0.02 .

In the fifth tube, the mean was 0.116 units (+ 0.163). P was < 0.05 .

In the sixth tube, the mean was 0.073 units (+ 0.067). P was < 0.05 .

In the seventh tube the mean value was 0.054 units (+ 0.048). It gave a non significant reduction when compared to that of control group.

From the above results, it was obvious that the CLL cases showed a persistent highly significant ($P < 0.02$) reduction in PCA in the first four tubes, the reduction was of lesser significance ($P < 0.05$) in tubes number five and six. Tube number seven gave a non significant reduction.



(Fig. 5)

□ control

AC L L

The procoagulant activity of the lymphoma group of patients:

Twenty three cases of lymphoma were investigated and showed the following results (Table 6) (Fig. 6).

In the first tube, the mean value was 0.981 units (+ 1.009). (P) was N.S.

The mean value in the second tube was found to be 0.490 units (+ 0.557). (P) was N.S.

In the third tube, the mean value was 0.324 units (+ 0.344). (P) was N.S.

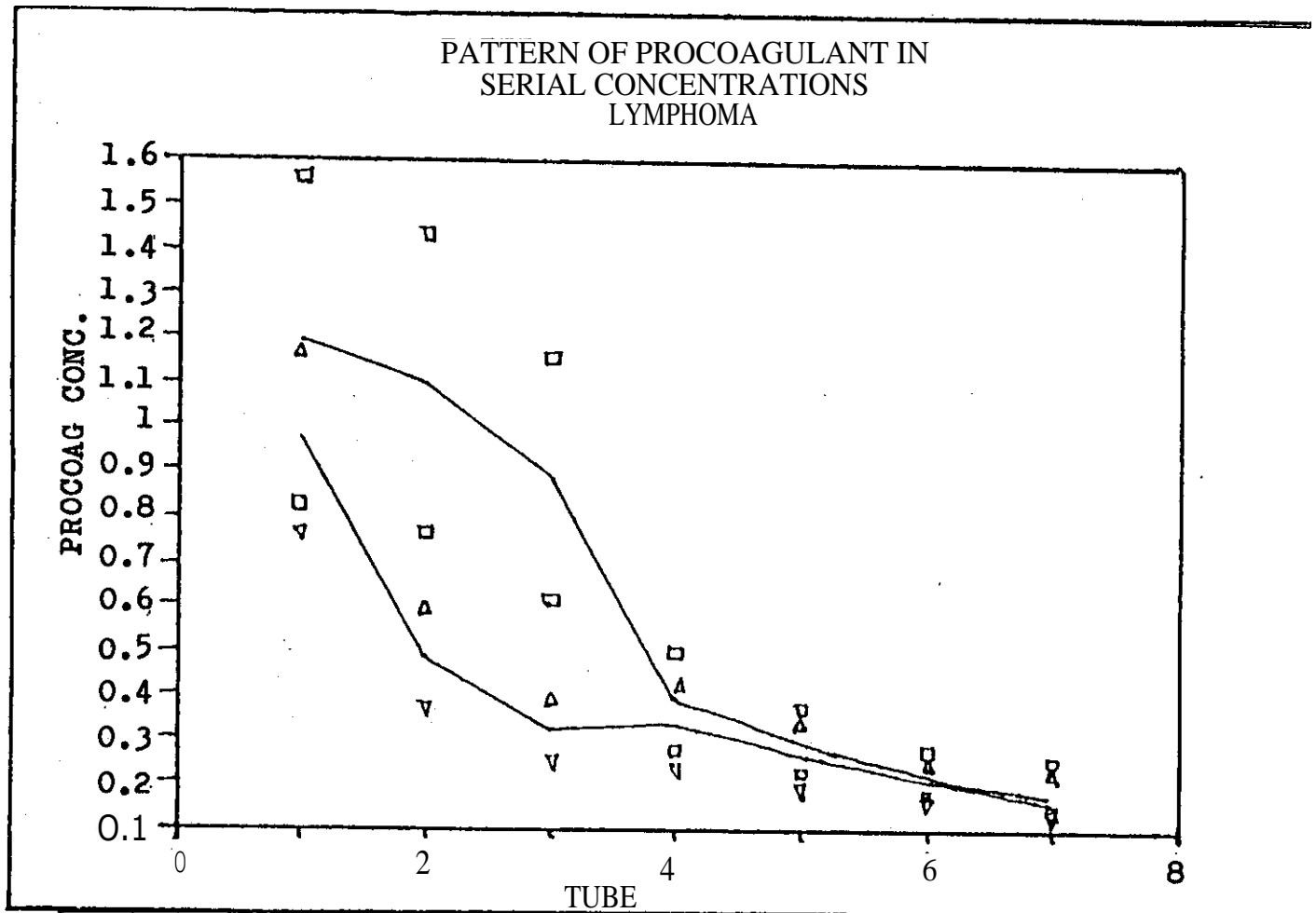
In the fourth tube, the mean value was 0.334 units (+ 0.474). (P) was N.S.

The mean value in the fifth tube was 0.268 units (+ 0.364). (P) was N.S.

The mean value in the sixth tube was 0.207 units (+ 0.216). (P) was N.S.

The mean value in the seventh tube was 0.213 units (+ 0.335). (P) was N.S.

The above results showed that the PCA was always reduced in the seven tubes but this reduction was a non significant one when compared to the normal control group. The sudden drop of PCA after the first tube (Fig. 6), gave the curve of lymphoma group a characteristic shape different from that of control group.



(Fig. 6)

tj control

A lymphoma

The procoagulant activity of the ALL group:

Twenty two patients of ALL were tested for their procoagulant activity. They contained ten patients of L1 type, ten other patients of L2 type, and two patients of L3 type. The L1 group was presented separately, also the L2 group was presented separately, then all groups L1, L2, L3 were presented together.

In case of L1 group alone, the following results were observed: (Table 7) (Fig. 7).

In the first tube, the mean value was 0.234 units (+ 0.247). (P) was < 0.02 .

In the second tube, the mean value was 0.098 units (+ 0.096). (P) was < 0.01 .

In the third tube, the mean value was 0.174 units (+ 0.193). (P) was < 0.02 .

The mean value in the fourth tube was 0.165 units (+ 0.256). (P) was N.S.

The mean value in the fifth tube was 0.102 units (+ 0.108). (P) was < 0.05 .

In the sixth tube the mean value was 0.062 units (+ 0.067). (P) was < 0.05 .

In the seventh tube the mean value was 0.032 units (+ 0.040). (P) was < 0.02 .

The above results showed that all L1 group showed

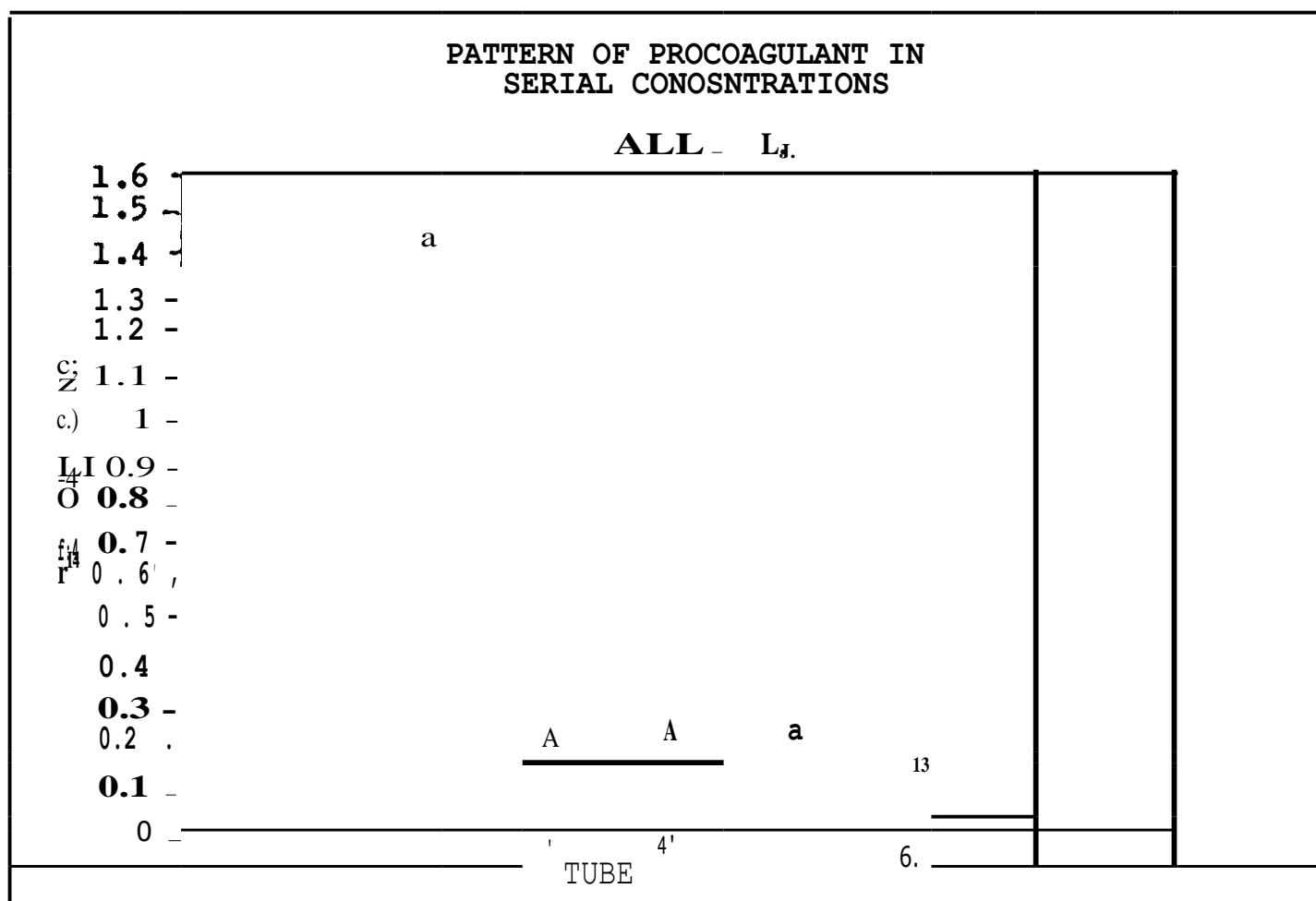
always a reduction in the PCA in all tubes except in tube number four where the reduction was non significant when compared to normal control group. The reduction of PCA was highly significant in tube number two ($P < 0.01$). A moderately significant reduction ($P < 0.02$) was found in tubes number one, three seven (1,3,7) A border line significant reduction ($P < 0.05$) was only in tubes five and six (5,6).

The mean of 41 tubes 1 2 3 4 5 6 tube 6 tube 7

No of tubes	tube 1	tube 2	tube 3	tube 4	tube 5	tube 6	tube 7
N	10	10	10	10	9	8	6
Mean	0.234	0.098	0.2	0.55	0.102	0.062	0.092
SD	0.42	0.05	0.09	0.56	0.10	0.06	0.04
t	2.30	2.906	2.510	1.583	2.925	2.0	2.231
P	<0.02	<0.01	<0.02	N.S	<0.05	<0.05	0.02

The procoagulant concentration showed significant reduction except in tube 4 compared to control

The cellular PCA is expressed in arbitrary thromboplastin units (See Material and Methods)



(Fig. 7)

□ control

4 ALL-L_I

The procoagulant activity of L2 group of patients:
(Table 8) (Fig. 8).

In the first tube the mean value was 1.263 units (+ 2.815). (P) was N.S.

In the second tube, the mean value was 0.957 units (+ 1.846). (P) was N.S.

In the third tube, the mean value was 0.913 units (+ 0.286). (P) was N.S.

In the fourth tube, the mean value was 0.941 units (+ 2.043). (P) was N.S.

The mean value in the fifth tube was 0.930 units (+ 2.567). (P) was N.S.

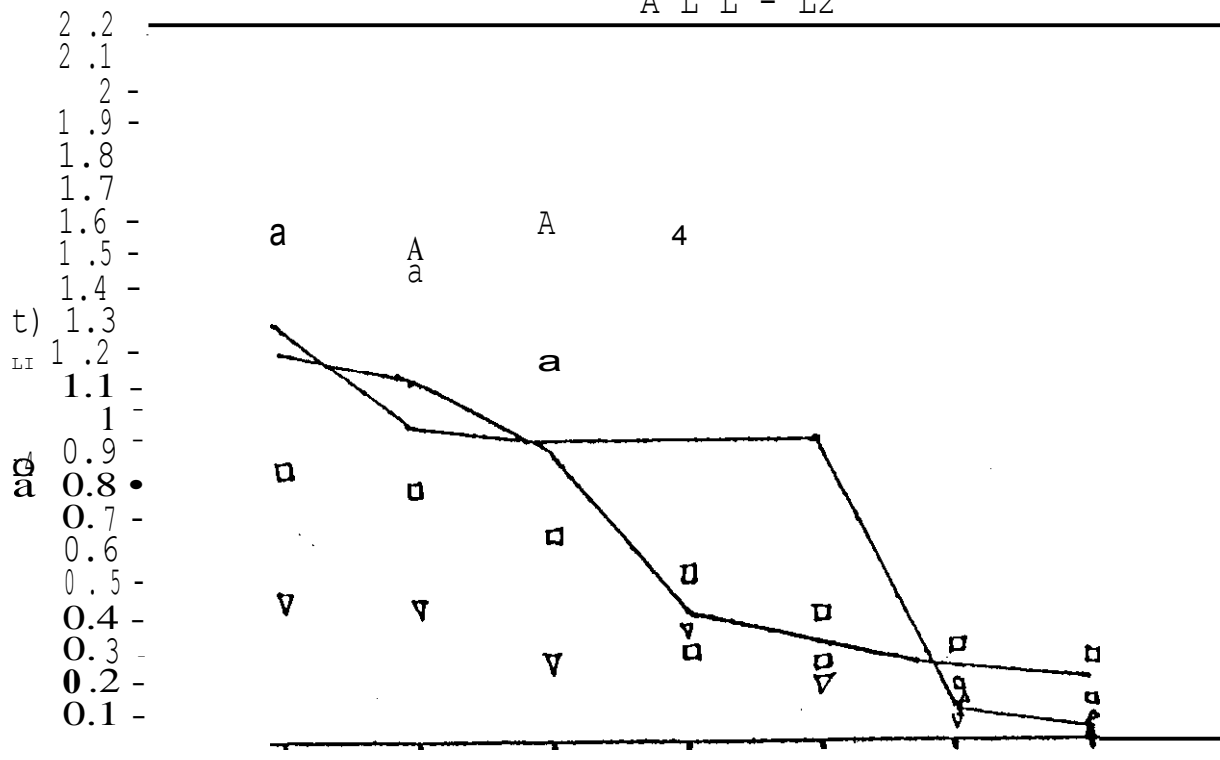
In the sixth tube the mean value was 0.109 units (+ 0.142). (P) was N.S.

The mean value in the seventh tube was 0.044 units (+ 0.062). (P) was N.S.

The results showed that in the L2 group of cases, the PCA was always reduction in the seven tubes tested but this reduction was non significant in all seven tubes when compared to the normal control group.

PATTERN OF PROCOAGULALANUIN
SERIAL CONCENTRATIONS

A L L - L₂



(Fig. 8)

Control

A L L - L₂

The procoagulant activity of (ALL) group together (L1, L2, L3). (Table 9) (Fig. 9):-

In the first tube the mean value was 0.748 units (+ 1.923). (P) was N.S.

In the second tube the mean value was 0.484 units (+ 1.288). (P) was N.S.

The mean value in the third tube was 0.498 units (+ 1.551). (P) was N.S.

The mean value in the fourth tube was 0.511 units (+ 1.407). (P) was N.S.

The mean value in the fifth tube was 0.494 units (+ 1.775). (P) was N.S.

The mean value in the sixth tube was 0.088 units (+ 0.104). The (P) was < 0.05 .

The mean value in the seventh tube was 0.042 units (\pm 0.048). (P) was < 0.05 .

The results showed that (ALL) group (L1, L2, L3) have always a reduction of PCA in all tubes tested except only in tube number six seven (6,7) which were the only two tubes to show border line significant reduction ($P < 0.05$). All other tubes showed non significant reduction when compared to control group.

I

H of Procoagu t o tto to s . 800 0 tto o t o 800 .

N of tube tube 1 tube 2 tub 3 tube 4 t to tube 5 tube 6 tube 7

N 22 22 22 22 21 18 14

Mean 0.748 0 84 0. 88 0. 511 0. 94 0.088 0.082

.D .923 1. 388 1.551 1.407 1.775 0.104 0.048

t 0 804 1. 05 0. 05 48 0. 74 13 050 2.11

0 N. • N.8 N 5 N.S N.S <0.05 <0.05

0 of 8 o t 0 t to tto 800 00 818 tto 0 of tto t to
 100 t to t to 100 tto t to 800 t to t to t to t to
 0 0 0 t to 800 • 800 800 800 t to t to 800 0 800

(see Nubert and Idebods)

A L L

control
A L L

control

A L L

The procoagulant activity of AML group:

Sixteen cases of AML were tested for their procoagulant activity and showed the following results. (Table 10) (Fig. 10).

In the first tube, the mean value was 0.885 units (+ 1.054). (P) was N.S.

In the second tube, the mean value was 0.970 units (+ 1.797). (P) was N.S.

In the third tube, the mean value was 0.471 units (+ 0.908). (P) was N.S.

In the fourth tube, the mean value was 0.428 units (+ 0.835). (P) was N.S.

In the fifth tube, the mean value was 0.445 units (+ 1.335). (P) was N.S.

In the sixth tube, the mean value was 0.204 units (+ 0.285). (P) was N.S.

The mean value in the seventh tube was 0.460 units (+ 1.478). (P) was N.S.

From the results, we were able to find that all AML cases showed a non significant reduction in their PCA when compared to the normal control group.

Table 10)

The mean values of procoagulant concentration in AML group compared to control group

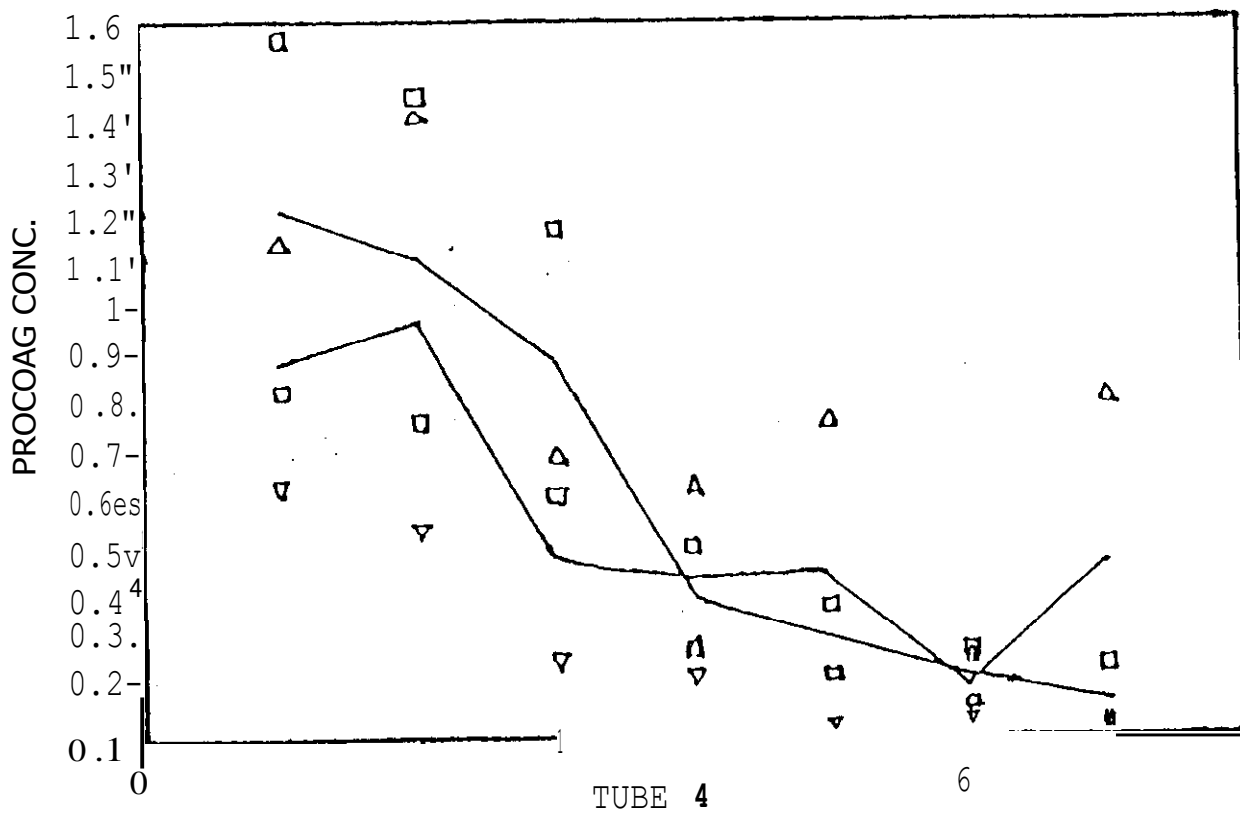
N of tube	tube	tube	tube 2	tube 4	tube	tube	tube
	0				0		0
	0.0	0	0.03	0.4		0.285	0.2
	0	0.008	0.5	1.5		0.285	1.478
2	0.53	0.	1.164	-0.167	0.7	0.0	0.
0		.5		N	.6	N	N 6

The procoagulant concentration showed Non-significant reduction
in all tubes compared to control

The cellular PCA is expressed in arbitrary thromboplastin units
(see Nomenclature and units)

PATTERN OF PROCOAGULANT IN
SERIAL CONCENTRATIONS

A M L



(Fig. 10)

control

A ML

The procoagulant activity of M3 group of patients:

Six patients of acute promyelocytic leukaemia were tested for their PCA. The following results were observed. (table 11) (Fig. 11).

In the first tube, the mean value was 4.937 units (+ 3.801). (P) was < 0.05 .

In the second tube, the mean value was 3.168 units (+ 2.158). (P) was < 0.05 .

In the third tube, the mean value was 2.417 units (+ 1.945). (P) was N.S.

In the fourth tube, the mean value was 1.620 units (+ 1.717). (P) was N.S.

In the fifth tube, the mean value was 1.234 units (+ 1.445). (P) was N.S.

In the sixth tube, the mean value was 0.826 units (+ 0.645). (P) was < 0.05 .

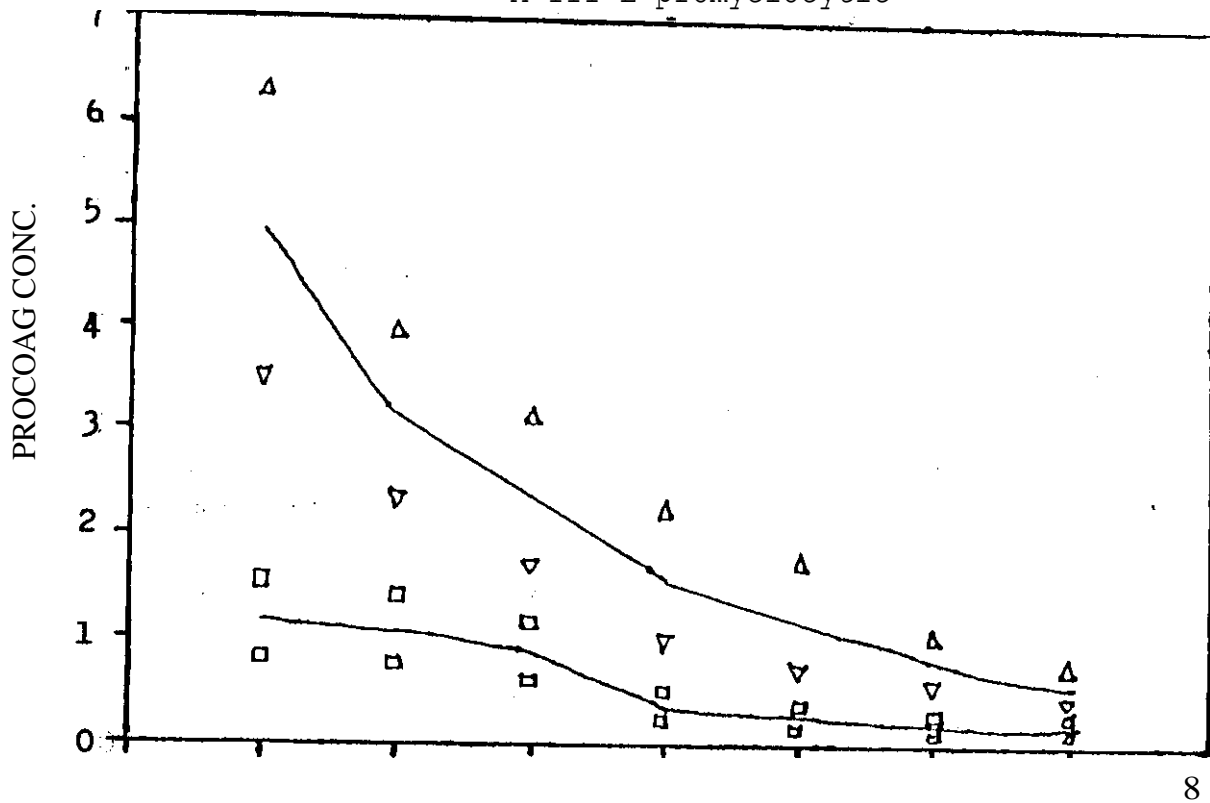
In the seventh tube, the mean value was 0.559 units (+ 0.577). (P) was N.S.

The results have showed that the highest procoagulant activity was presented by the M3 group of patients in all seven tubes tested but this increase was statistically significant in tubes number one, two, six (1,2,6) ($P < 0.05$) when compared to that of control group.

If the number of M3 cases was increased, this would possibly bring all tubes to the significant level.

PATTERN OF PROCOAGULANT IN
SERIAL CONCENTRATION

A III L promyelocytic



(Fig. 11)

control

promyeloeytic leuk.