

RESULTS

Tab.(1) Comparison between the two treatment groups regarding age:

| Age Group | Mean age | SD | t.test | P |
|----------------------------|-----------------|-----------|---------------|----------|
| Group I (30) | 35.5 | ±9 | 1.1 | 0.27 |
| Group II (15) | 32.6 | ±7 | | |

This table shows that there is no significant difference between mean age in two treatment groups (indicate perfect matching for age.)

Tab. (2) Relation of patients to prolonged standing, onset of appearance(during pregnancy) and family history in the two treatment groups:

| Character Group | Prolonged standing | | onset (During pregnancy) | | Family history | |
|----------------------------------|---------------------------|-----|---------------------------------|-----|-----------------------|-----|
| | No | % | No | % | No | % |
| Group I | 22 | 73% | 17 | 57% | 11 | 37% |
| Group II | 7 | 47% | 9 | 60% | 7 | 47% |
| Chi | 3.1 | | 0.04 | | 0.42 | |
| P | 0.07 | | 0.5 | | 0.52 | |

There is no significant difference between the two treatment groups regarding prolonged standing, pregnancy and family history.

Tab (3) lesion characteristics in the two treatment groups:

| Character Group | Site | | | | | | Size | | | |
|--------------------|------|----|-------|----|-------|---|------|----|----|---|
| | Calf | | Thigh | | Ankle | | T | | V | |
| | No | % | No | % | No | % | No | % | No | % |
| Group I | 23 | 76 | 5 | 17 | 2 | 7 | 24 | 80 | 6 | |
| Group II | 12 | 80 | 3 | 20 | - | - | 11 | 73 | 4 | |
| Chi | 1.07 | | | | | | 0.26 | | | |
| P | 0.5 | | | | | | 0.6 | | | |

There is no significant difference between the two treatment groups regarding site and size.

Tab (4) complaints of patients in both treated groups :

| Complain Group | Pain | | Cosmetic | | Chi | P |
|-------------------|------|-----|----------|-----|------|-----|
| | No | % | No | % | | |
| Group I | 16 | 53% | 14 | 47% | 0.18 | 0.7 |
| Group II | 7 | 47% | 8 | 53% | | |

No significant difference between the treatment groups regarding reason for treatment.

Tab (5): Comparison of injectable materials in relation to pain, cramp and hyperpigmentation:

| Group \ Character | Pain with injection | | Hyperpigmentation | |
|-------------------|---------------------|------|-------------------|-------|
| | No | % | No | % |
| Group I | 19 | 63% | 3 | 10% |
| Group II | 4 | 27% | 6 | 40% |
| Chi square | | 5.4 | | 5.6 |
| P | | 0.02 | | 0.018 |

(P < 0.05 = significant)

This table shows that pain with injection is significantly higher among 1st treatment group while hyperpigmentation is significantly high in ethanolamine oleate treated group.

Tab.(6) fate(improvement) of the lesion in the two treatment groups:

| Fate \ Group | Excellent | | good | | Moderate | | Fair | | Poor | |
|--|-----------|----|------|----|----------|----|------|---|------|---|
| | No | % | No | % | No | % | No | % | No | % |
| Group I | 18 | 60 | 8 | 27 | 3 | 10 | 1 | 3 | - | - |
| Group II | 6 | 40 | 3 | 20 | 4 | 26 | 1 | 7 | 1 | 7 |
| Chi square 4.94 P=0.2 non significant | | | | | | | | | | |

There is no significant difference between the two treatment groups regarding degree of improvement.

Tab. (7) Study the degree of improvement in relation to site of lesion:

| Group | Site | Excellent | Good | Moderate | Fair | Poor | Test |
|----------|-----------|-----------|-------|----------|-------|-------|-----------------------|
| | | No. % | No. % | No. % | No. % | No. % | |
| Group I | Calf(23) | 13 57 | 6 26 | 3 13 | 1 4 | - - | Chi= 2.7 P=0.8 |
| | Thigh (5) | 3 60 | 2 40 | - - | - - | - - | |
| | Ankle(2) | 2 100 | - - | - - | - - | - - | |
| Group II | Calf(12) | 3 33 | 2 17 | 4 33 | 1 8 | 2 8 | Chi=2.5 P=0.6 |
| | Thigh(3) | 2 67 | 1 33 | - - | - - | - - | |
| Total | Calf (35) | 17 48 | 8 | 7 | 2 | 1 | Chi=5 P=0.7 |
| | Thigh (8) | 5 62 | 3 | - - | - - | - - | |
| | Ankle (2) | 2 100 | - - | - - | - - | - - | |

This table shows that there is no significant (no correlation) difference between the degree of improvement and site of lesion.

Tab.(8) study of the size in relation to degree of improvement .

| Group | Size | Excellent | | Good | | Moderate | | Fair | | Poor | | Test |
|----------|--------|-----------|----|------|----|----------|----|------|----|------|----|----------|
| | | No. | % | No. | % | No. | % | No. | % | No. | % | |
| Group I | T (14) | 16 | 67 | 6 | 5 | 2 | 8 | - | - | - | - | Chi 5.3 |
| | V (6) | 2 | 33 | 2 | 33 | 1 | 17 | 1 | 17 | - | - | P 0.1 |
| Group II | T (12) | 6 | 55 | 2 | 18 | 2 | 27 | - | - | - | - | Chi 7.8 |
| | V(10) | - | - | 1 | 25 | 1 | 25 | 1 | 25 | 1 | 25 | P 0.1 |
| Total | T (35) | 22 | 63 | 8 | 23 | 3 | 14 | - | - | - | - | Chi 17.6 |
| | V (10) | 2 | 20 | 3 | 30 | 2 | 20 | 2 | 20 | 1 | 10 | P 0.008 |

(T= telangiectasias & V= Venulectasia)

There is no significant relation between site of lesion and improvement degree in each group while collectively regardless type of treatment, there is significant difference between size of lesion and degree of improvement

N.B (No. is small in each category separate).

Tab.(9) Fate of Hyperpigmentation after 3 months follow up:

| Character Group | Hyperpigmentation | Resolved |
|--------------------|-------------------|----------|
| Group I | 3 | 3 100% |
| Group II | 6 | 4 67% |

(Chi =2.1 &P =0.2)

There is no significant difference between the fate of hyper- pigmentation and type of treatment

N.B After 6months, the Hyperpigmentation completely resolved in the two treatment groups.

-Multivariate analysis

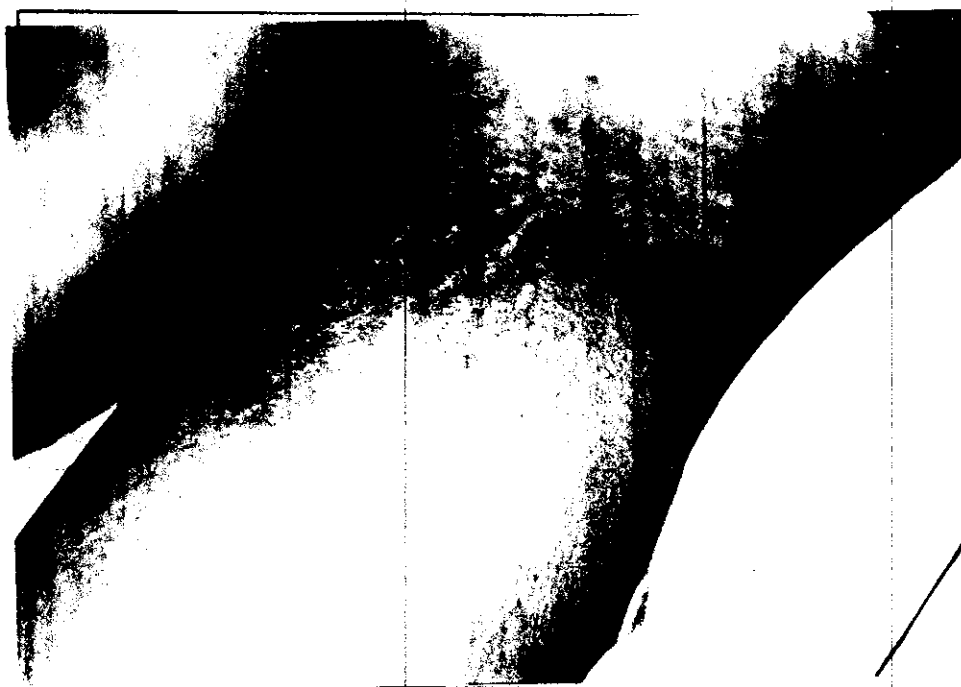
(Regression analysis) to study factors suggested to affect improvement with adjustment to each other and to occupation, pregnancy and family history.

| | <i>P coefficient</i> | <i>P</i> |
|--------------|-----------------------------|-----------------|
| Group | 0.539 | 0.046 |
| Site | 0.238 | 0.366 |
| Size | 1.05 | 0.002 |

The size was found to be significantly inversely related to degree of improvement, i.e. the smaller the size the better the degree of improvement, after adjustment to site and size the improvement degree of group I was found to be better than the group II.



Before injection



After 6 months



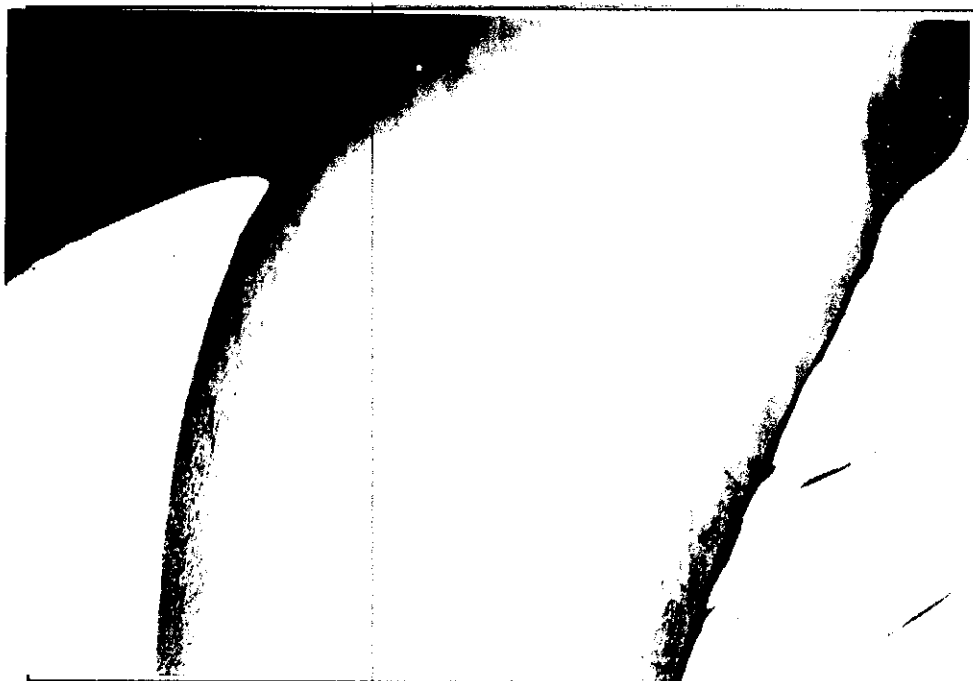
Before injection



After 6 months



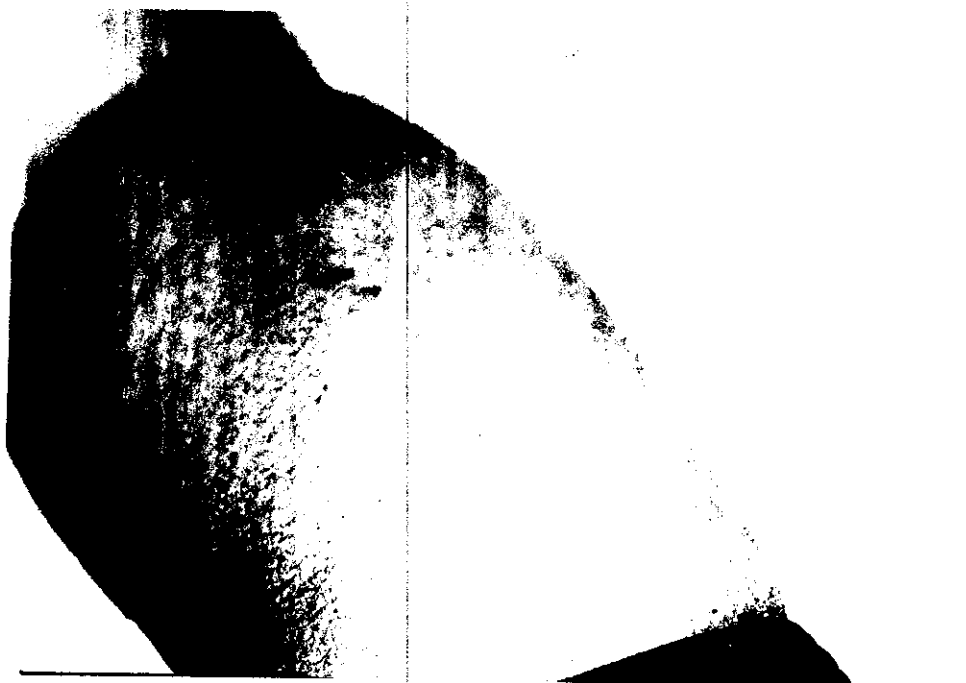
Before injection



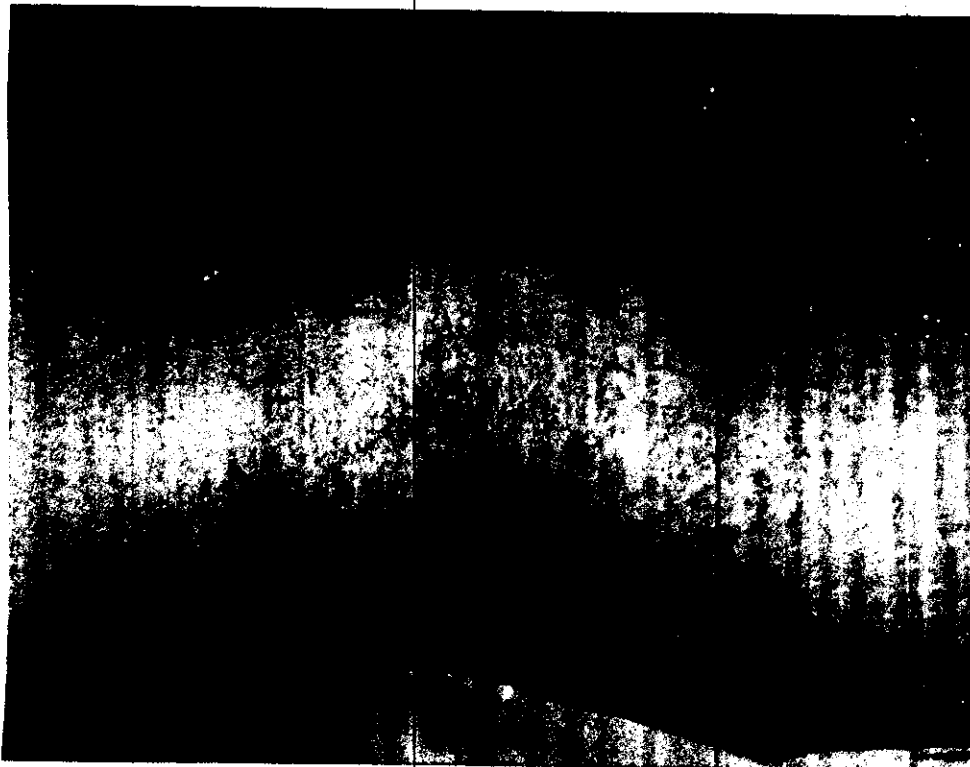
After 6 months



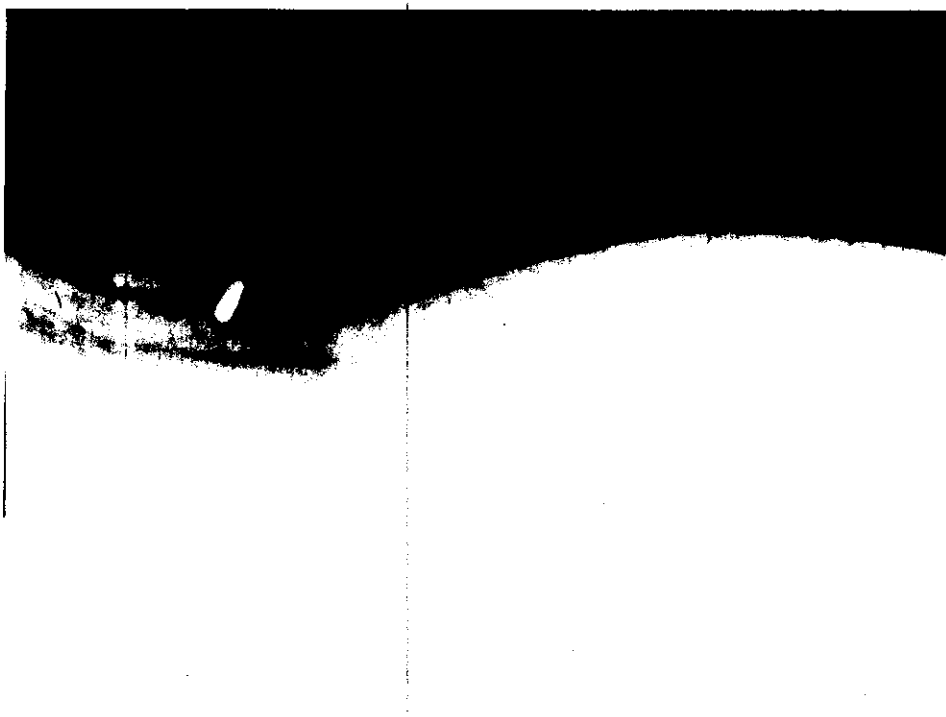
Before injection



After 1 month



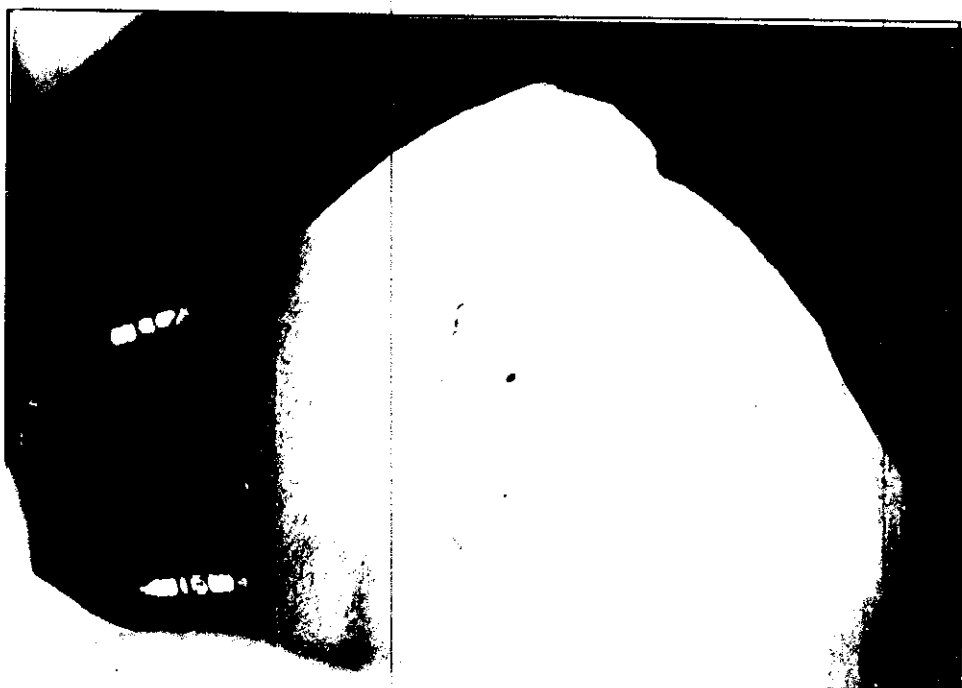
Before injection



After 1 month



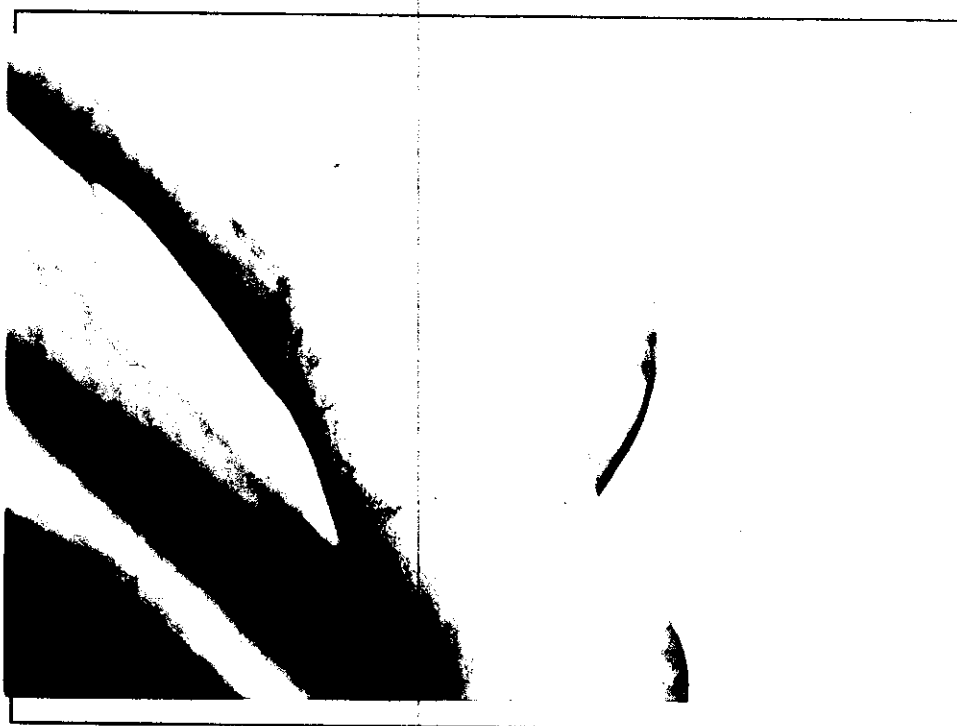
Before injection



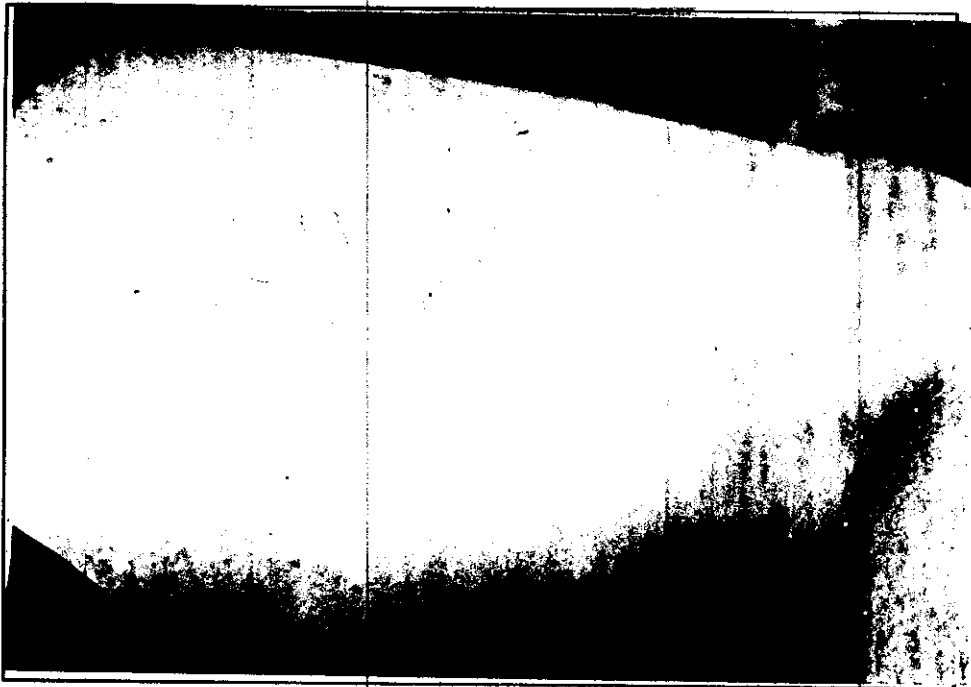
After 1 month



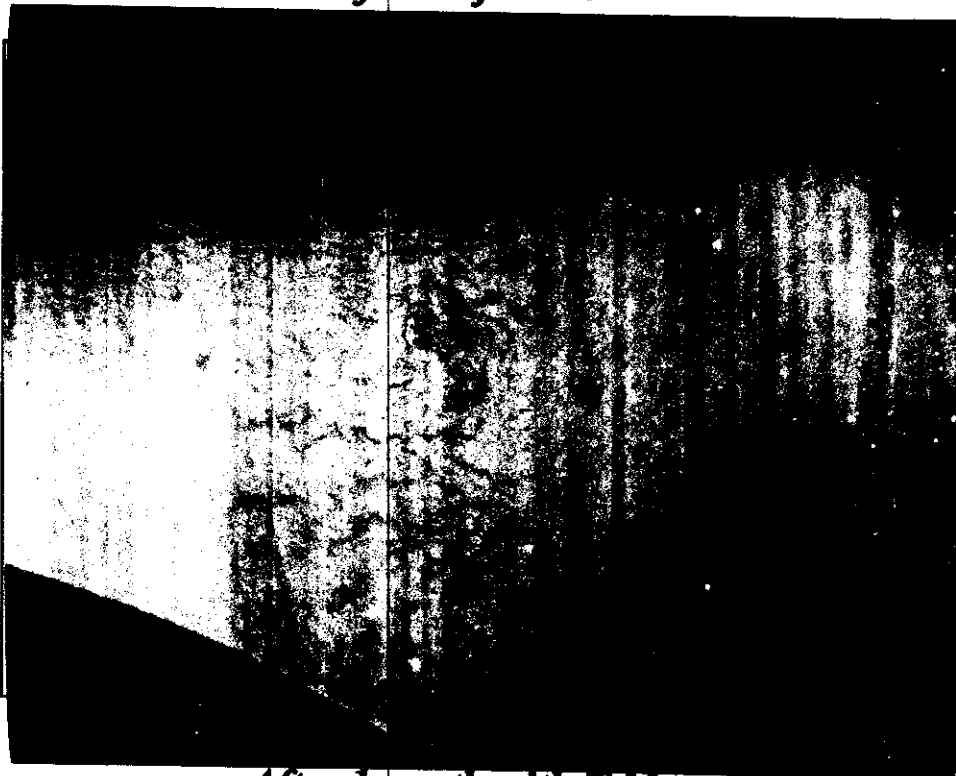
Before injection



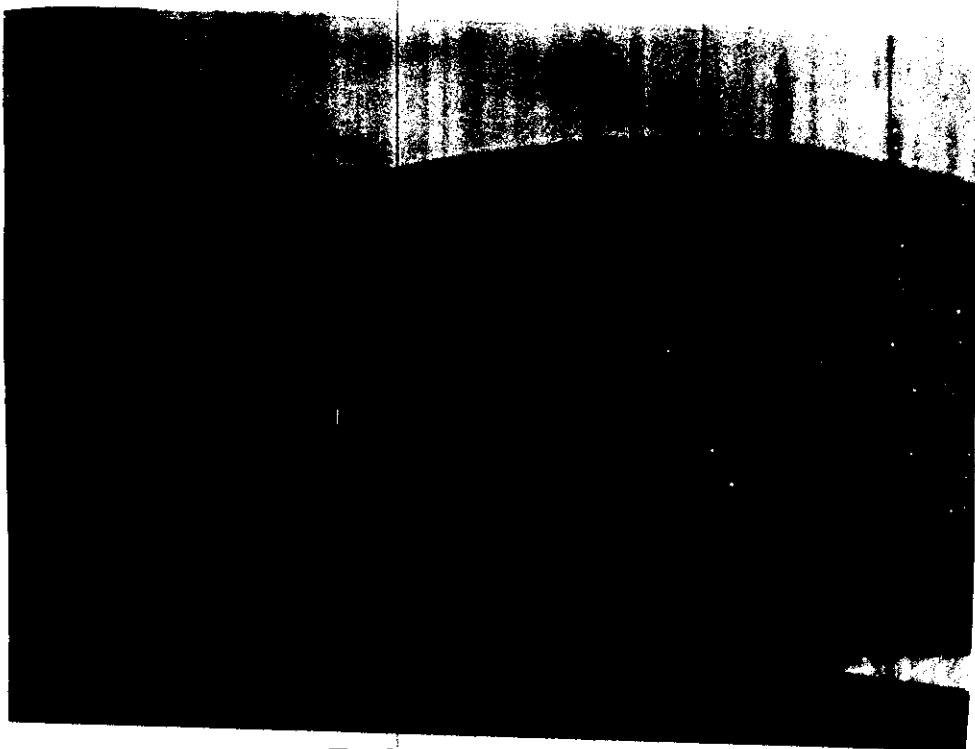
After 2 weeks



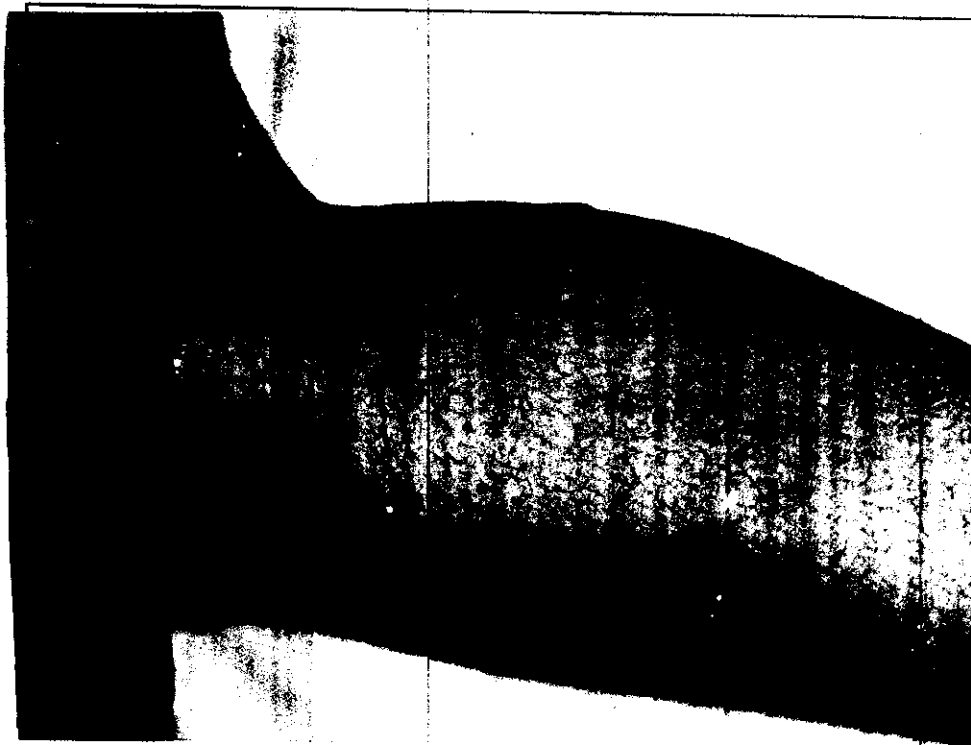
Before injection



After 1 month with T.M

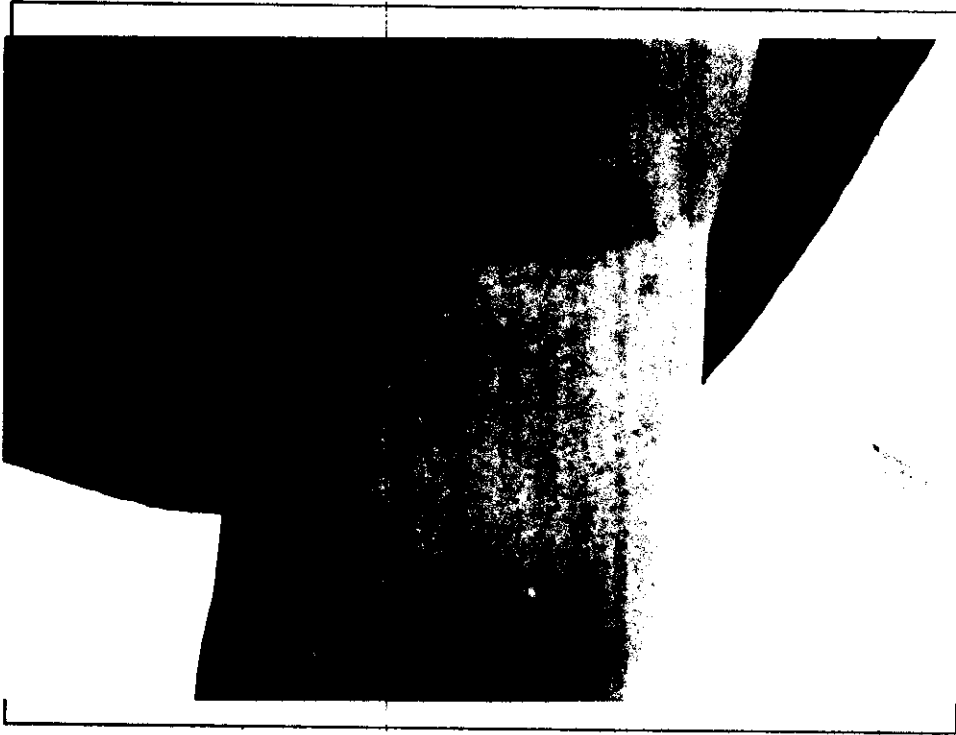


Before injection

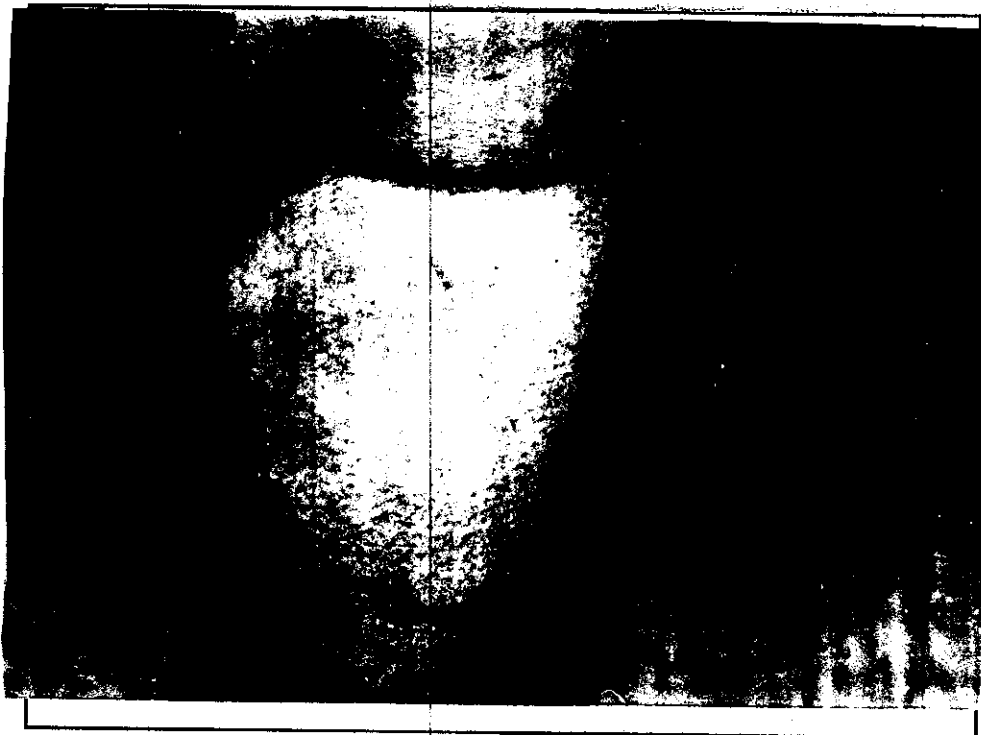


After 2 weeks

Slight ecchymosis with Scleremo extravasation



Before injection

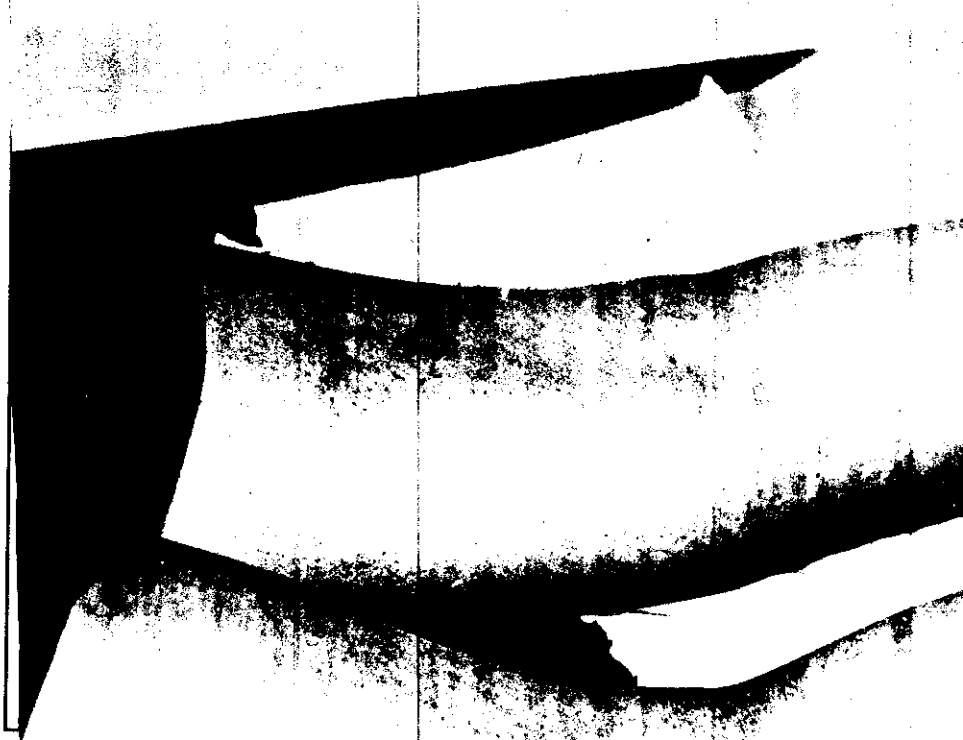


After 3 months

Hyperpigmentation (golden yellow color over the treated vessel)



Before injection



After 2 weeks

Hyperpigmentation with Ethanolamine oleate injection